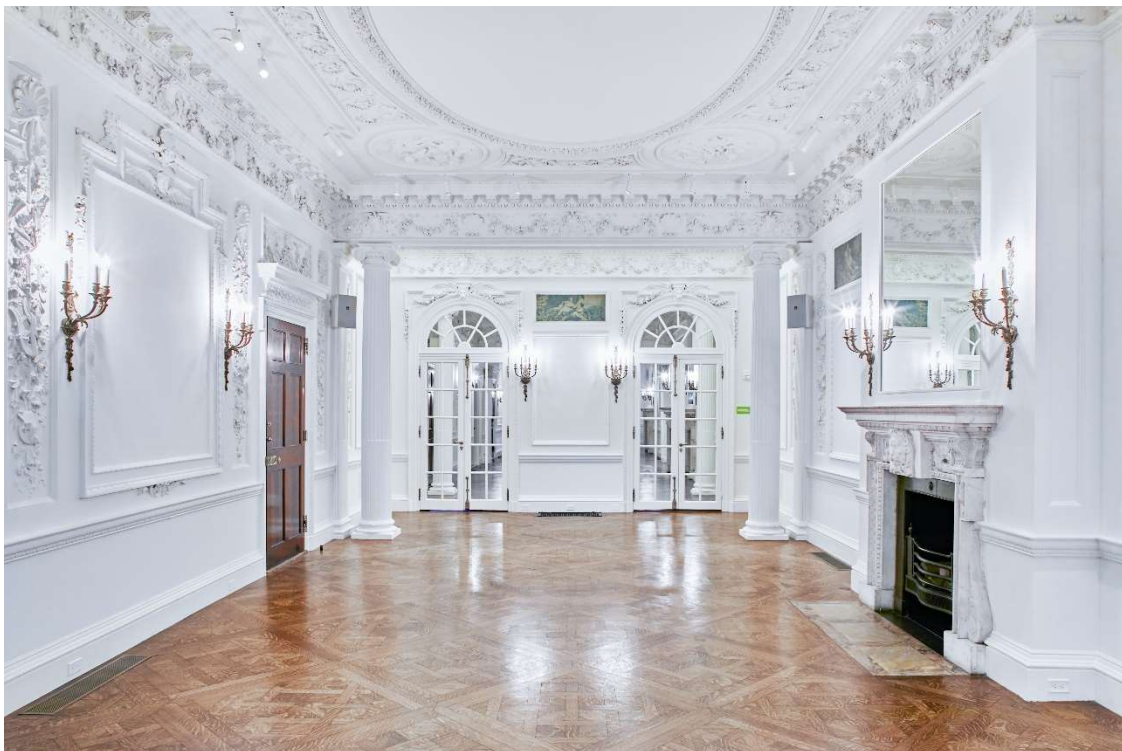
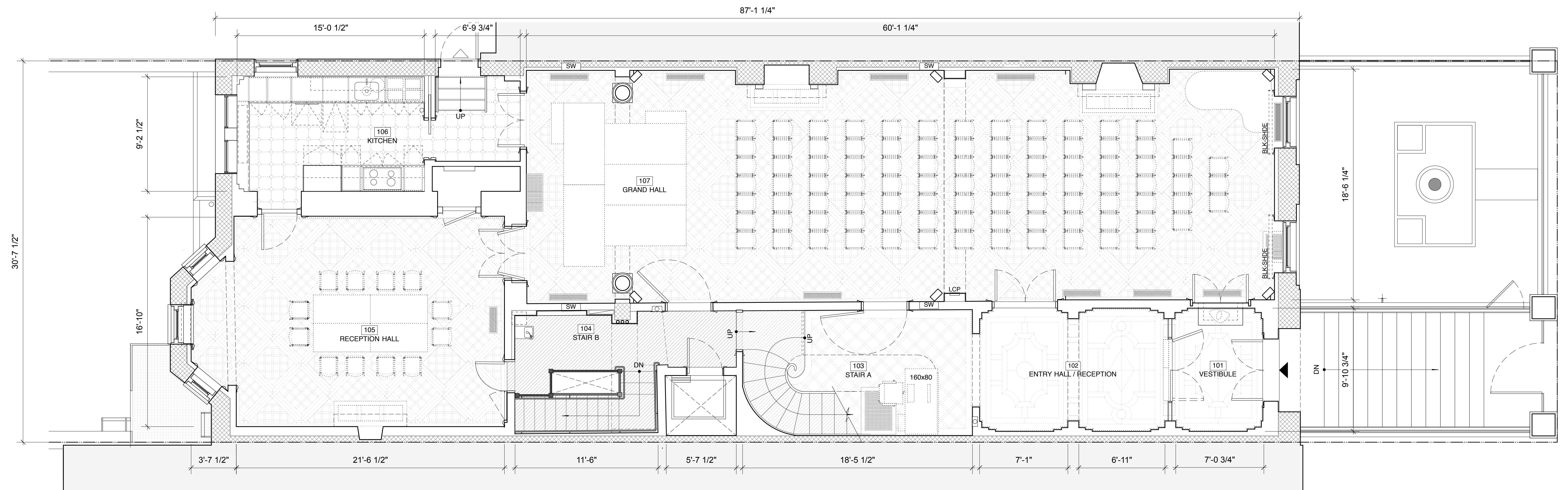


Studio 170 space at Goethe-Institut Boston

For more info and questions, contact Annette Klein, (617) 893-5498, Annette.klein@goethe.de

Grand Hall:





1st FLOOR PLAN

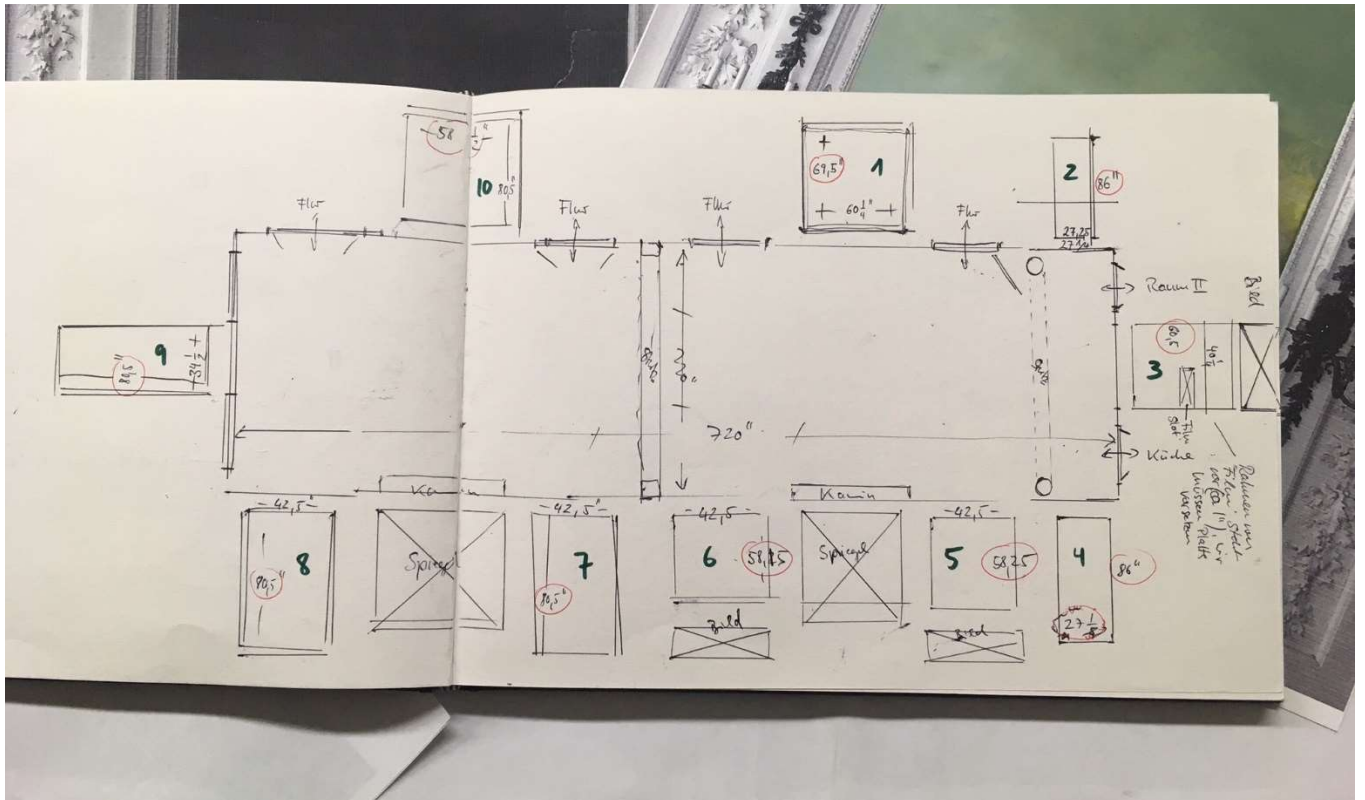
SCALE: 1/4" = 1'-0"

Auditorium Wallspace dimensions:

Note: Although the Grand Hall has wall space where works can be hung, they are normally occupied with acoustic sound panels. These can be removed but this will affect the room acoustics considerably.

	Floorplan location	Inches (HxW)	Cm (HxW)
Hallway side	1	69.5 x 60.25	177 x 153
	2	86 x 27.25	218 x 70
	3	60.5 x 40.25	153 x 102
Kitchen side	4	86 x 27	218 x 69
	5	58.25 x 42.5	148 x 108
	6	58.25 x 42.5	148 x 108
	7	80.5 x 42.5	205 x 108
	8	80.5 x 42.5	205 x 108
Window side	9	80.5 x 34.5	205 x 88
Hallway side	10	80.5 x 58.5	205 x 149

Auditorium floorplan with dimensions:



Additional Spaces

Entrance hallway (2-3 possible spaces for hanging works):



Back Courtyard



Front Garden

