

**Sa mûde ||khowa  
am, Mindas!**



“Mapas ta i , Mindas? ”  
Tis ge mamasa ra dî.



“|Oro ||gams tawa ta ge ti |hōsan  
|kha si ra |huru,” tis ge Mindasa ra  
mî.

“Ta |uru re sa brelde  
‡nûisa, is tis aisi.

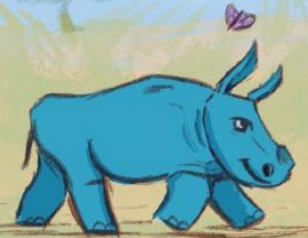




“Tita ge brel- e ðhaba tama hâ,” ti ge  
Mindasa âixandom!nâse ra mî. “Tita ge  
brel-di ose ra mû tsî daoba ta ge a ðan.”



“Tita ge |guri !gûs xa  
||khoaxaba he.”





“Tsau ta ge hâ tsî ta ge nēba nî mâ.”



“!â ta ge a. Xu e ta ge ra †û †gao.”

“Ouch, ƒan-i g era!”





“Tae ame |khonxa  
||nâuga nēga? ||îgu ge  
kaise a tsaura.”







“Mindas!” Tis ge  
mamasa ra !au.

“Kē re tae-es go  
|uru sa, ” tis ge  
mamasa ra  
mî.



“Brel- e ta ge  
‡haba tama hâ!  
Breldi ge a  
!khompō tsî ta  
ge tita ||îdi ose ra  
mû!

“Amaxase?” Tis ge  
mamasa ra dî.

||gams |guse ta ge |nai go ha,”  
Tis ge Mindasa ra mî.





“Oh! Kaise i ge nēba a îxa,”  
Tis ge Mindasa ra mî.



“Kē re, ti |hon ge |nai !âu te hâ. A ta nēsisā ī  
re. !Gâitsēs mamas!”

