

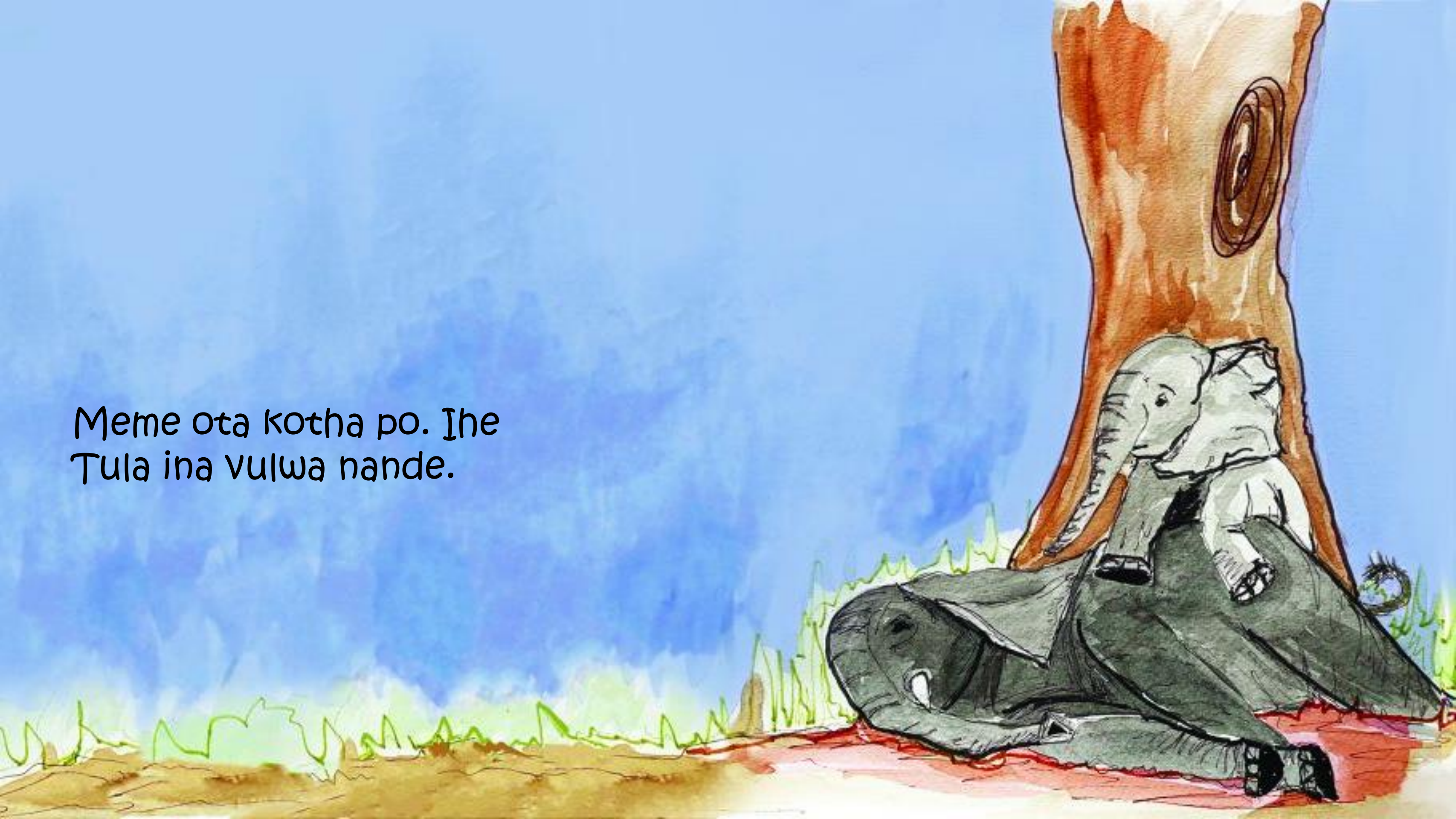
# Olye ta nyongoty Tula?



Laura-Jo Scriba | Silke Van Der Merwe | Tataleni Ilonga



Meme ota kotha po. Ihe  
Tula ina vulwa nande.





Tula okwa ka endaenda po.  
Okwa mono oshaanda shevi oshishona.






“Oshike mbela ...  
Olye ta dhana  
mpano?”







Nangame onda hala  
wo okudhana!”

“Ongoye Iye?” okahwa okashona  
taka ende taka kakadhala  
komunkati gwaTula.





“Oh, otashi  
ningi ndje  
uunyangal Ashe!”



“Oh, otashi  
ningi ndje  
uunyangal Ashe!”



“Oh, otashi ningi  
ndje  
uunyangal Ashe!”





„Atshuuuuu!“





“Oshike?”



Tula okwa pendutha  
oondjamba.





“Onda li ashike te dhana!”

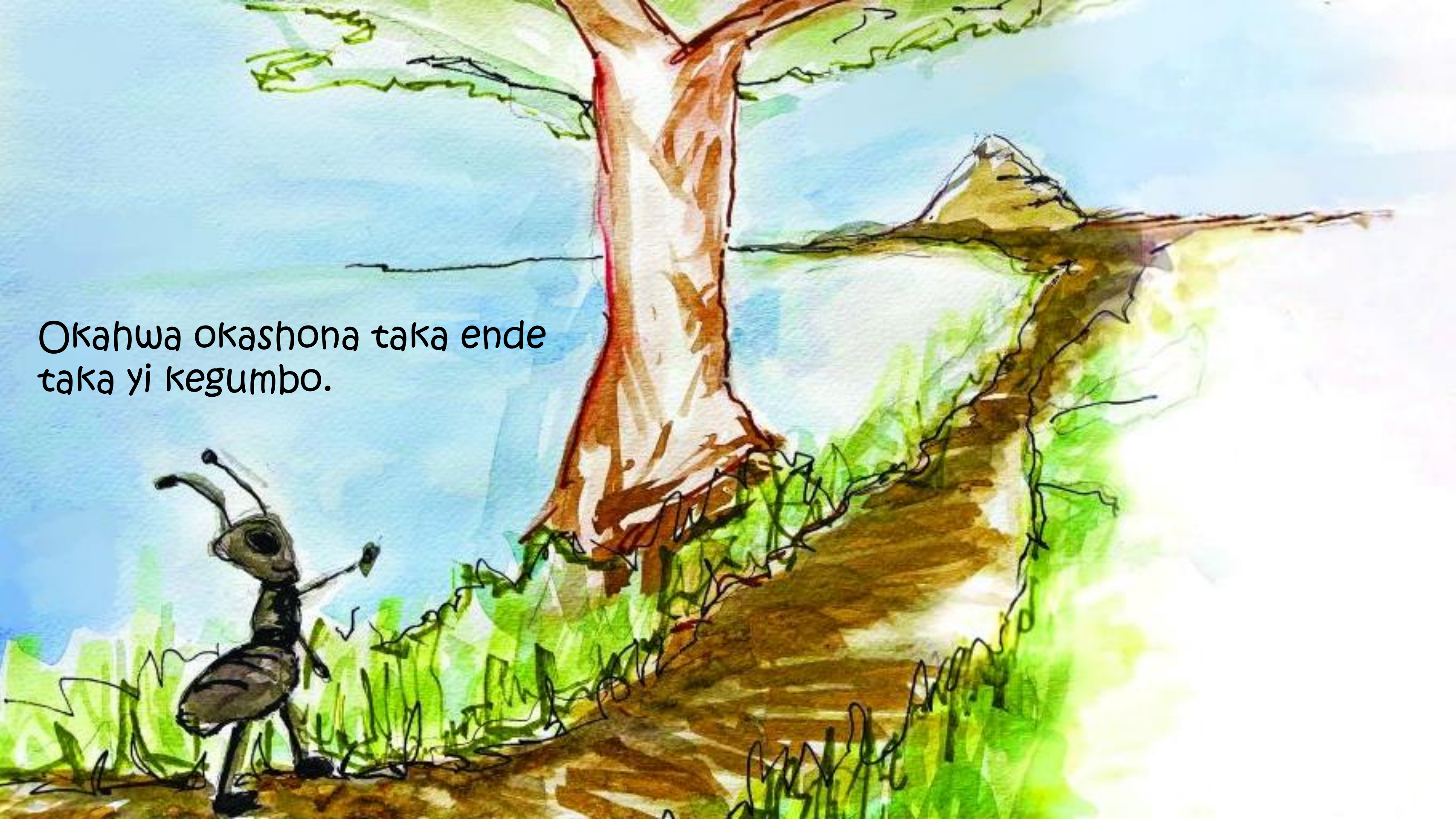


“Ondi shi shi!”  
Meme ta  
papatele Tula.

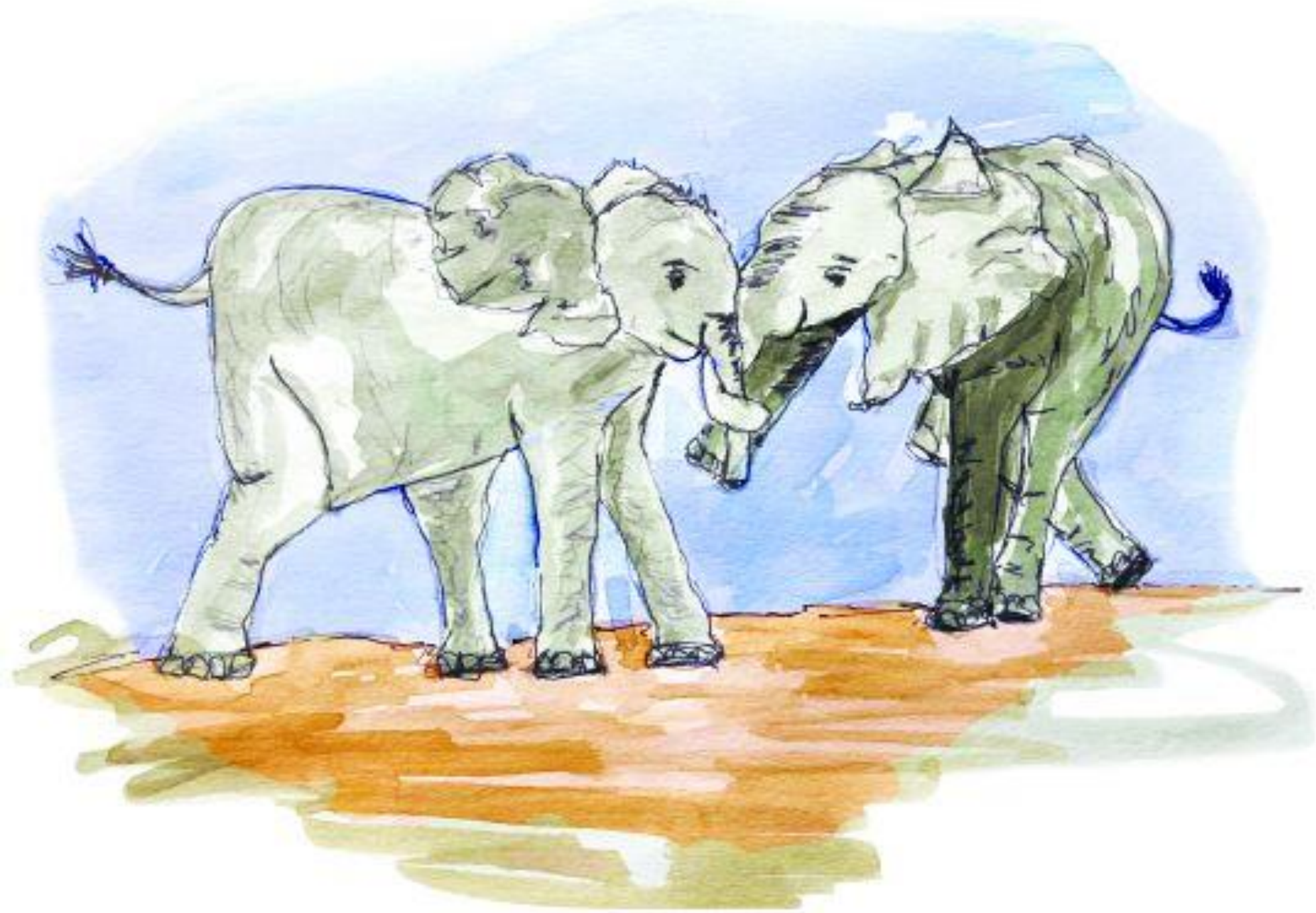




Okahwa okashona taka ende  
taka yi kegumbo.







“Otashi limbilike!” Tula ta ti,  
ye ta tondokele kookuume ke,  
noku ya hokololela iikumitha  
mbyoka a mono ko.



