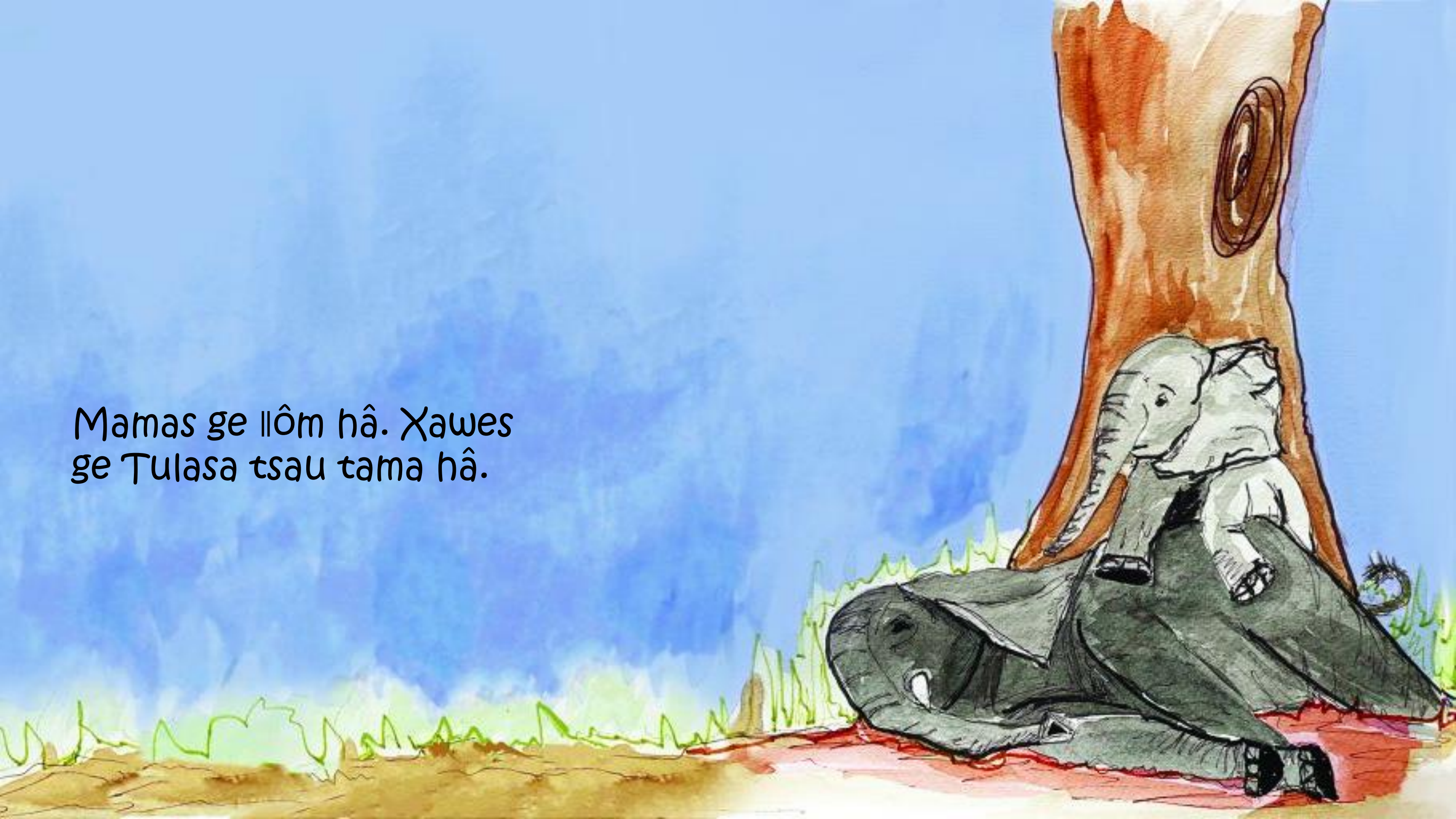


Ham-e Tulasa ra sausau?



Laura-Jo Scriba | Silke Van Der Merwe | Tataleni Ilonga

Mamas ge llôm hâ. Xawes
ge Tulasã tsau tama hâ.



Tulas ge ra !gû. ||Îs ge !homsa ra mû.



“Nē i ge a !hao ...
ham-e nēba ra Ihuru?”



“Tita tsîn ge ra lhuru †gao!”



“Şasa a ham?” Ti ra dîse i
ge †khari †goweruro-e Tulas
ai ra †haro



Oh! Şausau
ra!”



Oh! Şausau
ra!”



Oh! Şausau
ra!”



„Atchooo!“



“Tae-e?”



Tulas ge †Khoana go
†khai†khai.



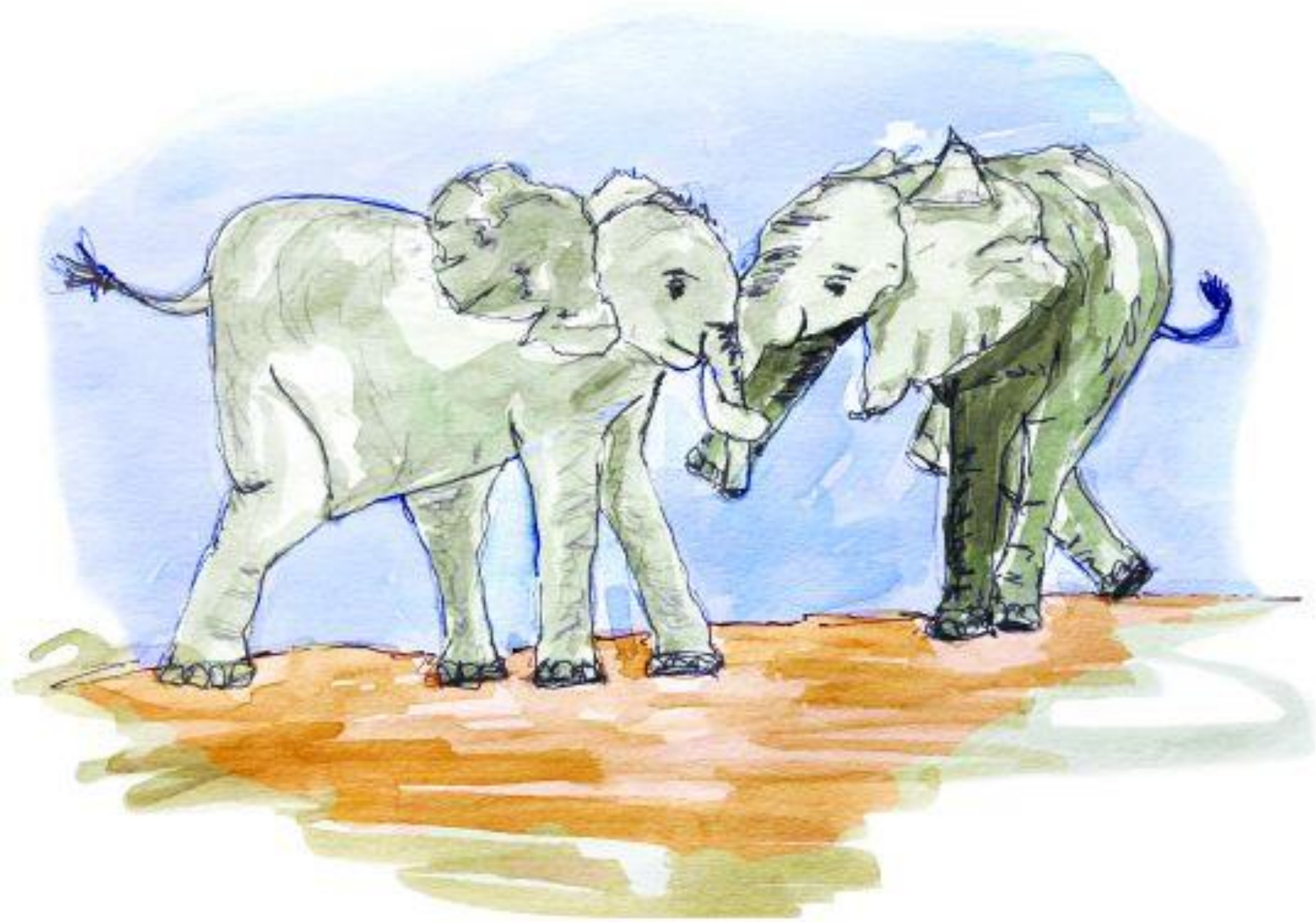
“!Hurus Iguisa ta ge goro hî!”

“An ta ge a.”
Mamas ge Tulasa
ra !khotga



‡Khari ‡gowerurob ge omsa
!Oa ra Oa.





“Tae ame !gûlhaosa go i!”
Tis ge Tulasana Ihōsana !Oa ra
!khoese ra mî tsî ge llîna ra
mîba, !gâib llaeb hînas go uhâ
ib xa.

