

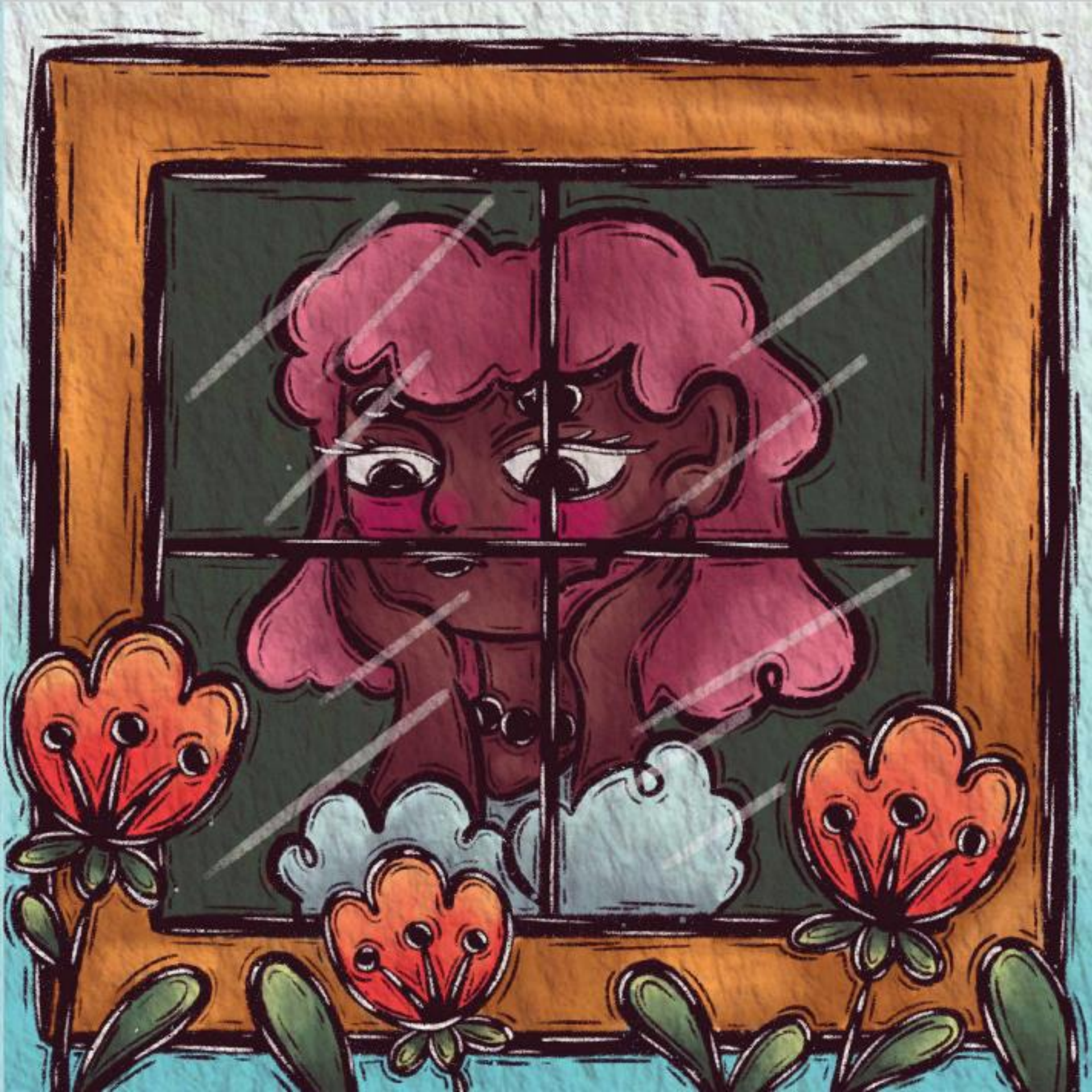


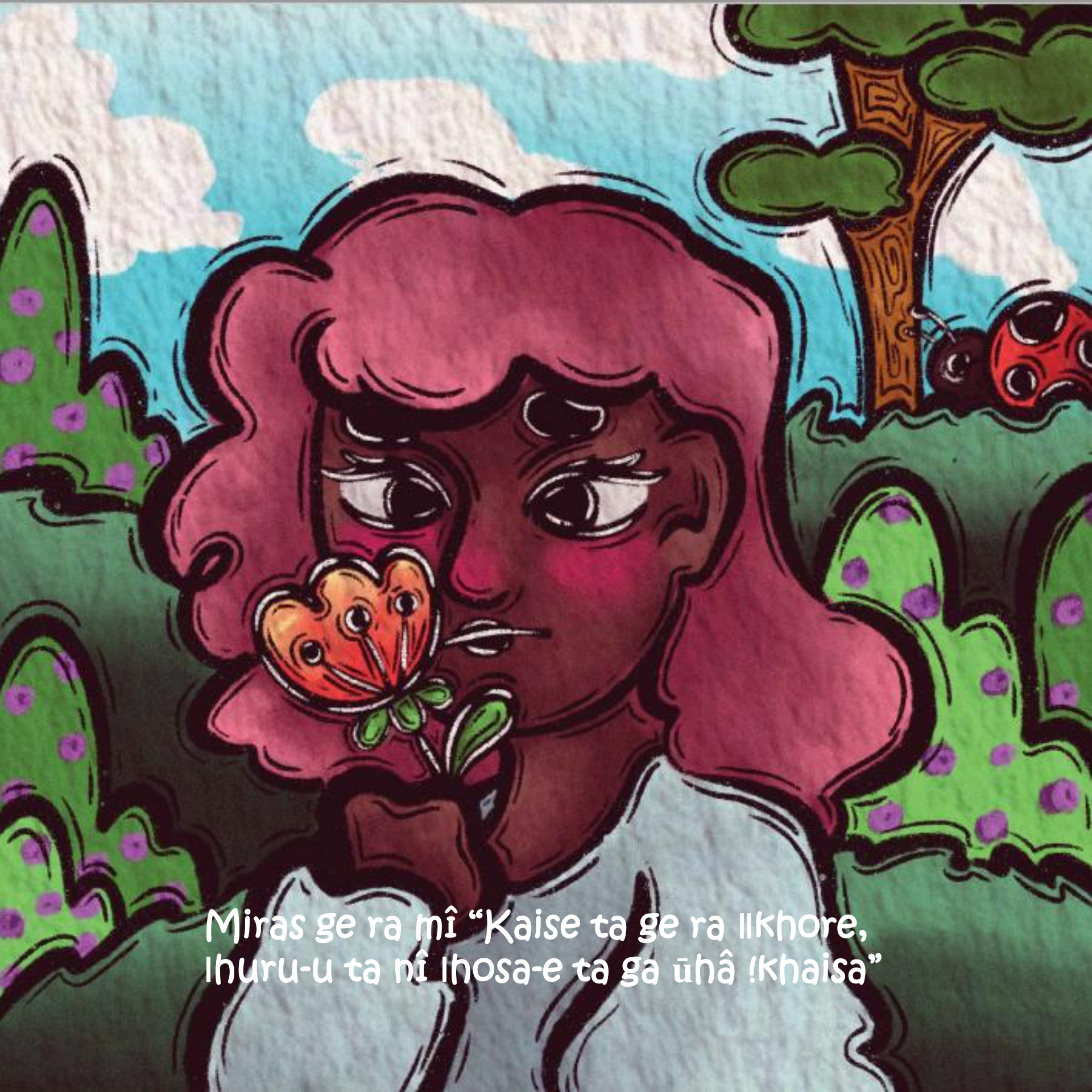
# Myra's | Hōsan

Charmaine // Gamxamūs    Belia Liebenberg    Benisia K. Nghivali

# Myra's | Hōsan

Charmaine // Gamxamŭs    Belia Liebenberg    Benisia K. Nghanivali





Miras ge ra mî “Kaise ta ge ra llkhore,  
lhuru-u ta nî lhosa-e ta ga ūhâ !Khaisa”



“!Gâitsēs Mira,” Tis ra Ilgamabesa mî.  
“Tita ge a Pandu, sa Ihosa kai Ikha ta ge a.”

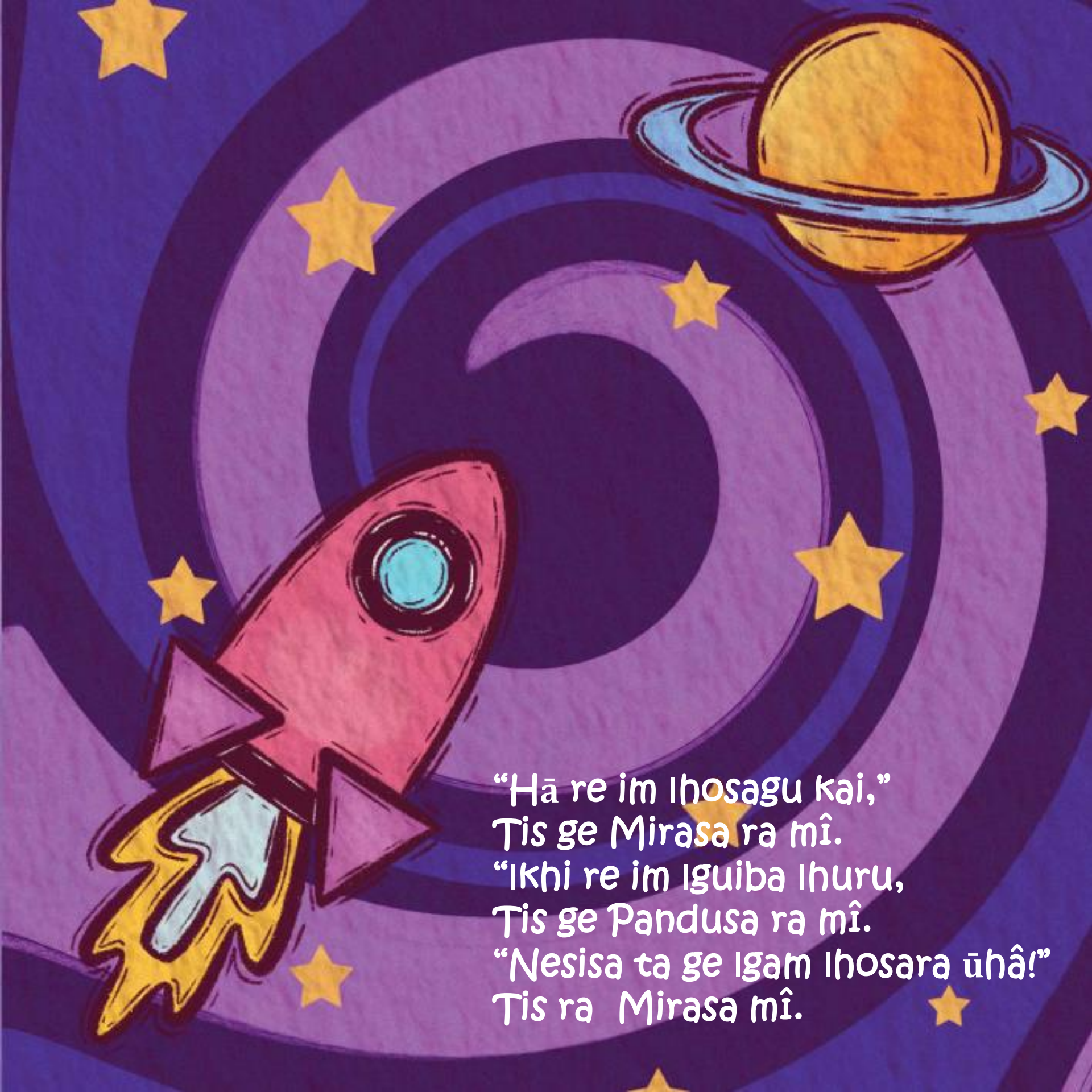






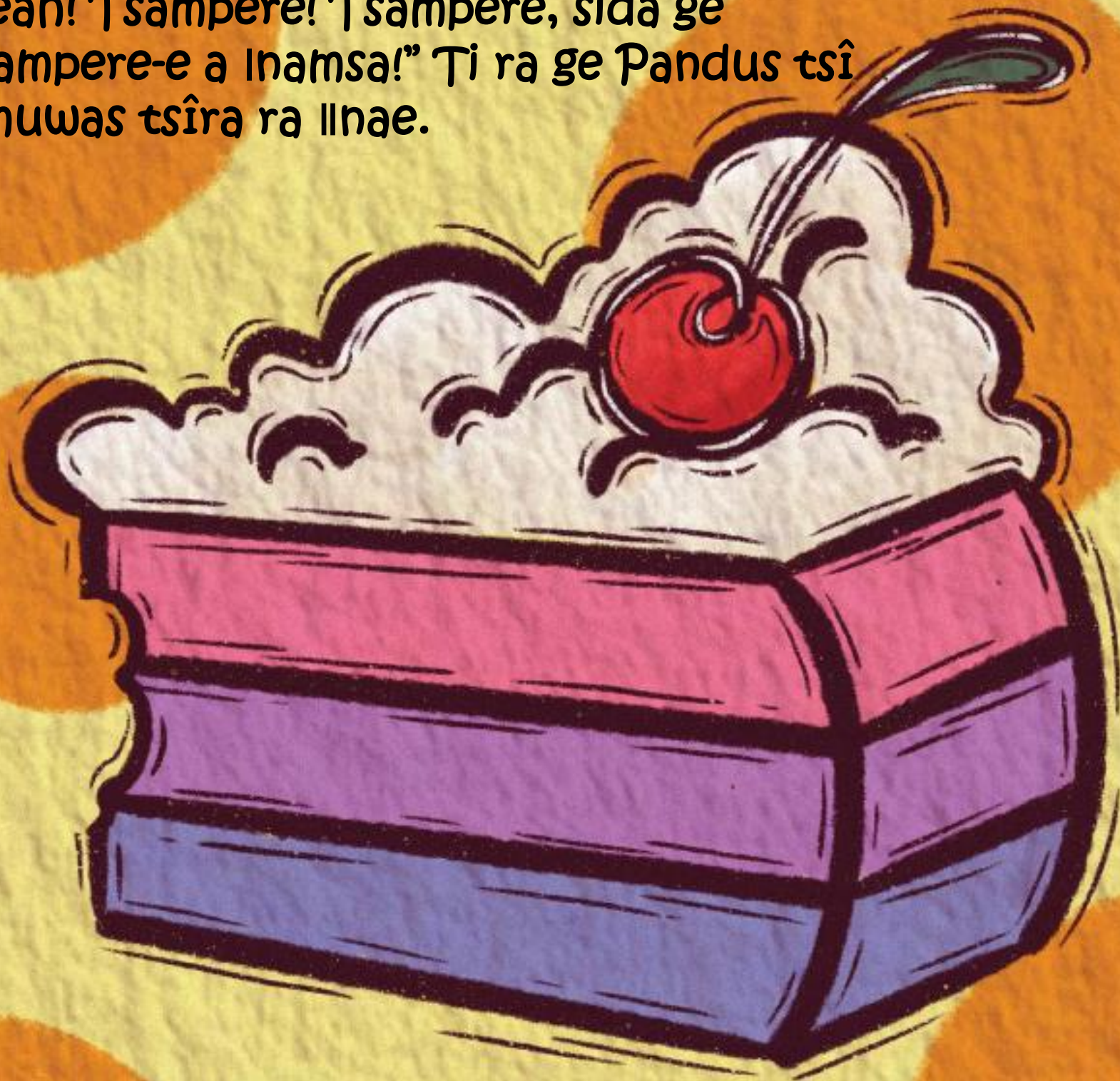
“Şado hamdo?” Tis ge Mirasa hū-labesa ra  
dî. “Tita ge a Omuwa,” Tis ge hū-labesa ra !eream.






“Hā re im Ihosagu kai,”  
Tis ge Mirasa ra mî.  
“Ikhi re im Iguiba Ihuru,  
Tis ge Pandusa ra mî.  
“Nesisa ta ge Igam Ihosara ūhâ!”  
Tis ra Mirasa mî.

“Tsampere-em ge ðû llkha!” Tis ge Mirasa ra  
“Yeah! Tsampere! Tsampere, sida ge  
Tsampere-e a Inamsa!” Ti ra ge Pandus tsî  
Omuwas tsîra ra llhae.



A vibrant, child-like illustration on a background of diagonal stripes in light blue, green, and white. On the left, a girl with a round brown face, large black eyes, and a wide smile has thick, black, curly hair. She wears a red dress with a white diagonal stripe. To her right, a yellow bee with a smiling face and black wings is positioned above a red ladybug with black spots and a black head. In the bottom right corner, the tips of two colored pencils, one red and one purple, are visible. The overall style is simple and joyful, typical of children's educational materials.

“Inöllnā Ikham ge a!”  
Tis ra Omwasa mî.  
“Tita ge Inöllnāsa Inamsa,  
” Tis ge Mirasa ra mî .



“Tsî sâ†ûi llkhas tsînam ge i,”  
Tis ge Pandusa  
ra mî, Omuwas ra kâ!gâ o.



“Saro ge !gâi Ihosa ro,”  
Tis ge Mirasa ra mî.  
“Kaisem ge !gâise Iguiba goro Ihuru,  
” Ti ra mîs ge Pandusa.

“Yeah! Yeah!”  
Tis ge Omuwasa ra mî.

||Khoaxase! ||Khoaxase!  
||Khoaxasem ge goro Ihuru.

Nē !nona Ihosadi ge ra ||nae.  
(Narrator)



“Nēsisa ta ge nî oas ge. || Arim ge nî Ihao.

“!Gâitsēs Pandu! !gâitsēs Omuwa!”  
Tis ge Mirasa ra mî.

“!Gâitsēs Mira!” Tis ta Pandusa mî.  
“!Gâitsēs Mira!, Ihaom ge nî!”  
Tis ge Omuwasa ra mî.





