



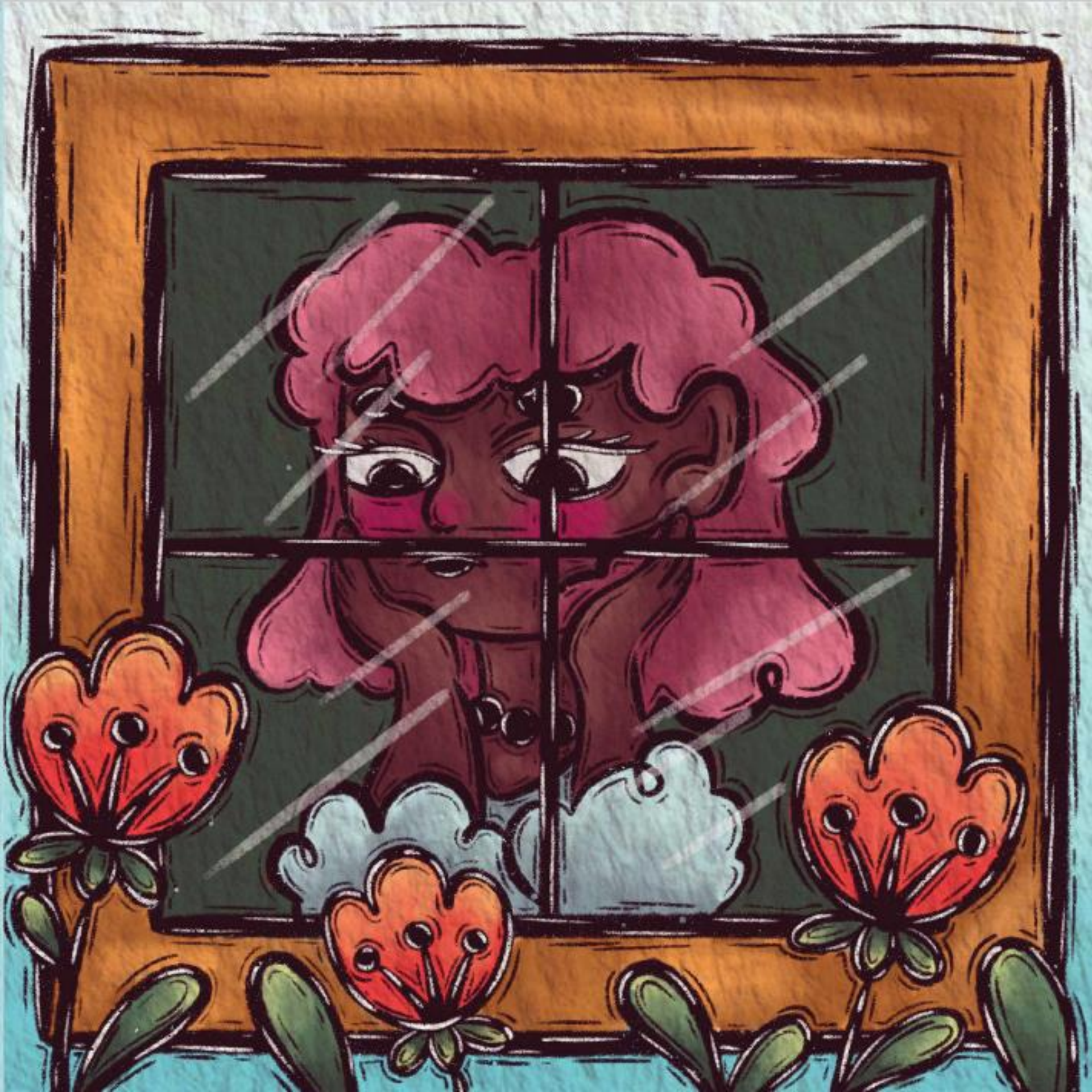
# Ditsala ga Myra

Charmaine // Gamxamûs

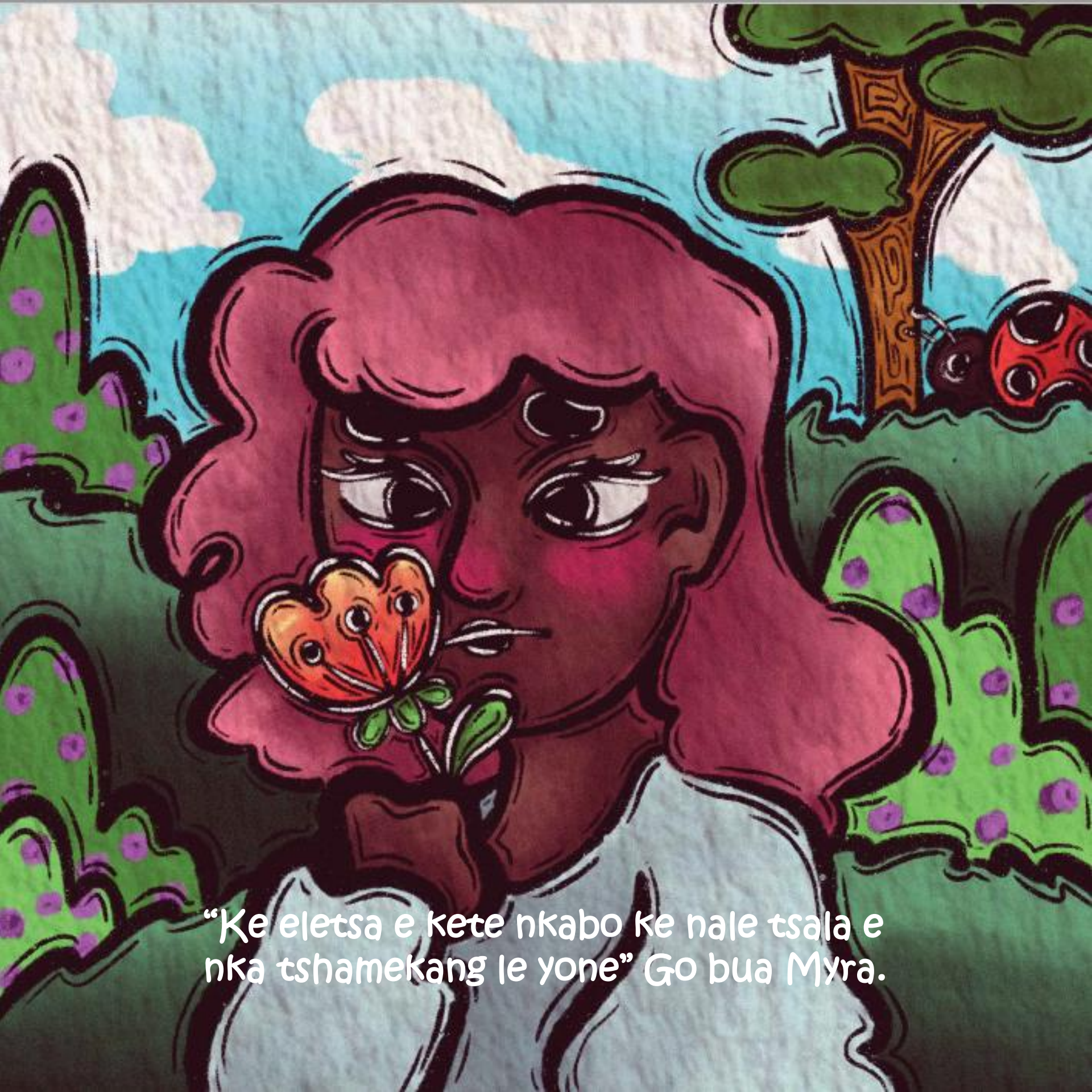
Belia Liebenberg

Benisia K. Nghivali









“Ke eletsa e kete nkabo ke nale tsala e nka tshamekang le yone” Go bua Myra.





“Dumela Myra” Go bua Khukhwane. “Ke nna Pandu, nka nna tsala ya gago”







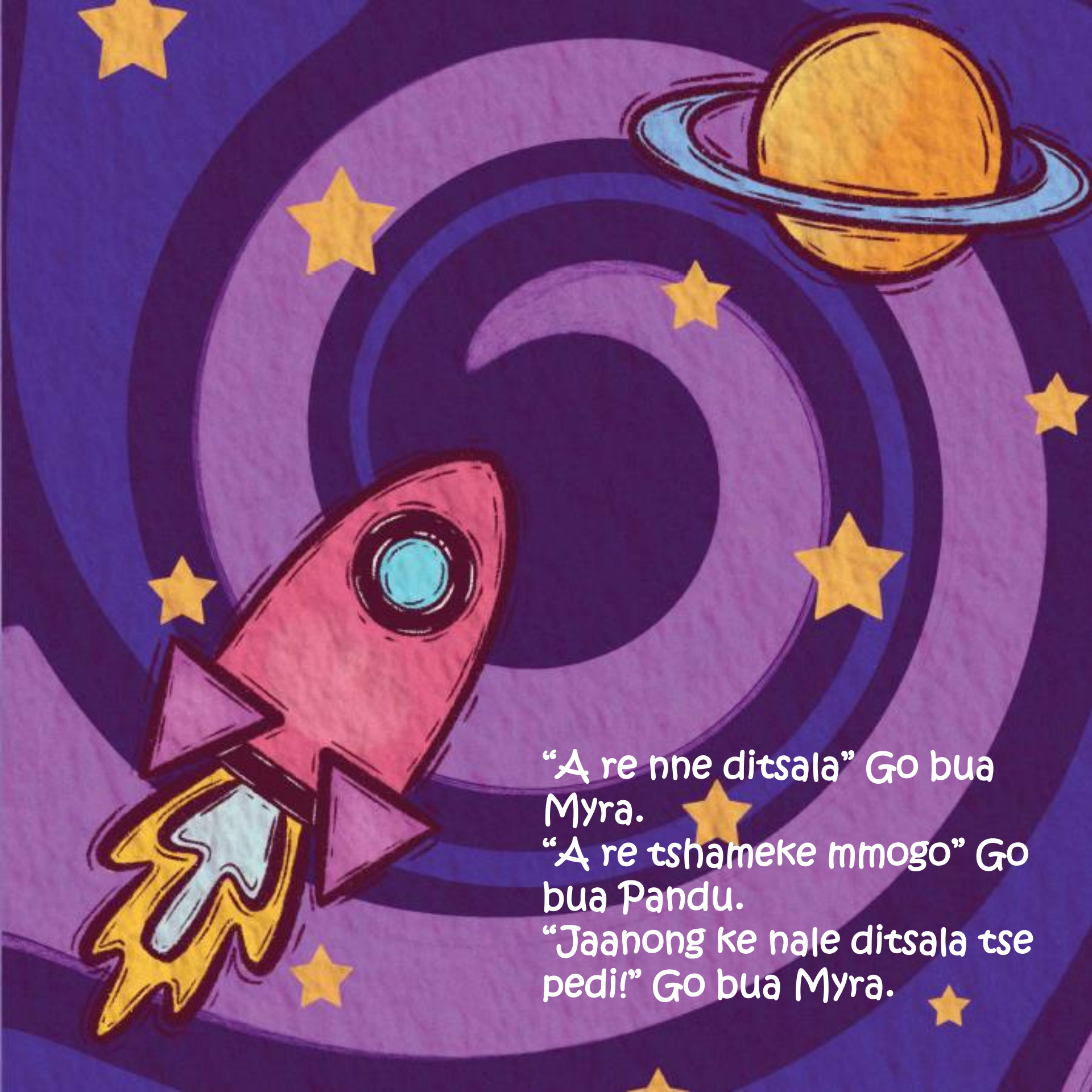






“Ke wena mang?” Myra a botsa serurubele. “Ke nna Omuwa” Go bua serurubele.





“A re nne ditsala” Go bua Myra.

“A re tshameke mmogo” Go bua Pandu.

“Jaanong ke nale ditsala tse pedi!” Go bua Myra.





“Re ka ja Kuku!” Go bua Myra.  
“Ee! Kuku! Kuku, Re rata Kuku!”  
Go bua Pandu le Omuwa a opela.





“Re ka Tshwantsha  
gape!” Go bua Omuwa  
“Ke rata go  
Tshwantsha,”  
Go bua Myra.





“Gape re kgona go ikhutsha” Go bua  
Pandu Omuwa a sena go etimola.







“Le ditsala tsa nnete e le ruri”  
Go bua Myra.

“Re ne ra tshameka monate thata re le  
mmogo,”  
Go bua Pandu.

“Ee!Ee!” Go bua Omuwa  
“Go ne go le monate, re ne re itumetse!”

Ditsala tse tharo di opela mmogo.







“Ke tshwanetse ka ya gae jaanong. Ke tla  
le bona kamoso.

Go siame Pandu!

Go siame Omuwa!” Go bua Myra.

“Go siame Myra!” Go bua Pandu.

“Go siame Myra, Re tla kopana”

Go bua Omuwa.







