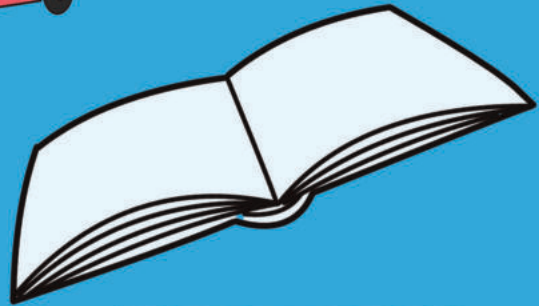
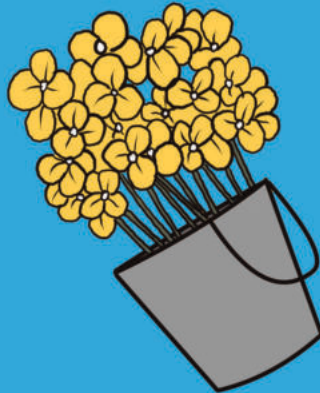


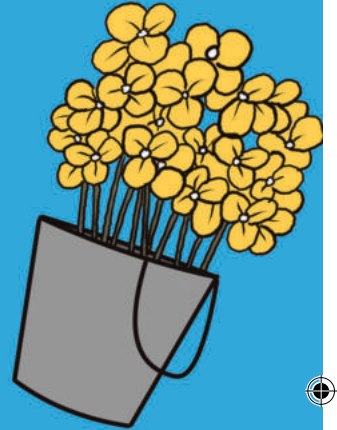
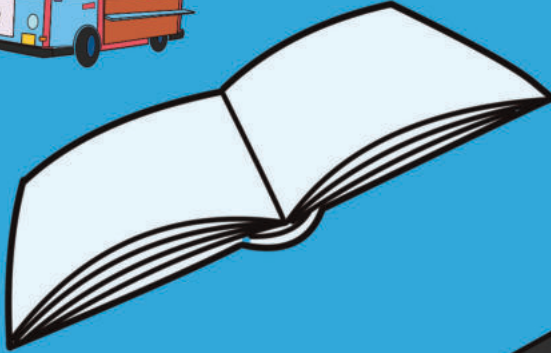


TITA GE RA...KAI ≠GAO

Nē ≠khanis Ihonkhoen ge...









Mâ Igôa-i hoa i ge koro kurixa i ga o kaidisi #khanina nî ūhâ. !Nas !aromas ge, Book Sprintsa #oa#amsa xoa-aona ra !haolhao, Namibiab !lgae#hōa #khanide māsenxase nî xoana. !În hâ supuse a #nûi!khuni-e !lkhāna. !Nāsa !gâsasib tsî xuna !lgâi!nâs !aroma, sao ra #haweba sari re: www.booksprintnamibia.org

Tita ge ra ... kai #gao

!Nō!nâ!lgau-aos Mitchell Gatsi xa

Xoa-aos Lucia Shali-Paulus xa

Kuru!nōas Rauha Shagandjua xa

|Unikō#gās Nasrin Siege xa

#Nûi!khunis Marino Kharuxab xa

Khomai-aos Christa Titus xa

Xoamâis Lisa Borman xa

Book Sprint Namibias ge Goethe-Institut Namibiab dis tsî Embassis Federal Republikli Duitse !hüb di huib !kha 29 #Nû!nâiseb 2022 ai ge dîhe.

ISBN: 978-99945-902-9-2

This work is licensed under a Creative Commons Attribution 4.0 Licence (<http://creativecommons.org/licenses/by/4.0/>). You are free to share (copy and redistribute the material in any medium or format) and adapt (remix, transform, and build upon the material) this work for any purpose, even commercially. The licensor cannot revoke these freedoms as long as you follow the following license terms:

Attribution: You must give appropriate credit, provide a link to the license, and indicate if changes were made. You may do so in any reasonable manner, but not in any way that suggests the licensor endorses you or your use.

No additional restrictions: You may not apply legal terms or technological measures that legally restrict others from doing anything the license permits.

Notices: You do not have to comply with the license for elements of the material in the public domain or where your use is permitted by an applicable exception or limitation.

No warranties are given. The license may not give you all of the permissions necessary for your intended use. For example, other rights such as publicity, privacy, or moral rights may limit how you use the material.





TITA GE RA...KAI ≠GAO

Lucia Shali-Paulus

Mitchell Gatsi

Rauha Shagandjua





“Kō re,” tis ge Nalisa
ra mî.
“||Nās ge mamasa.”







“Kai ta ka o, o ta ge
ra |apa!nam kai ɬgao,
Mamas khami.”



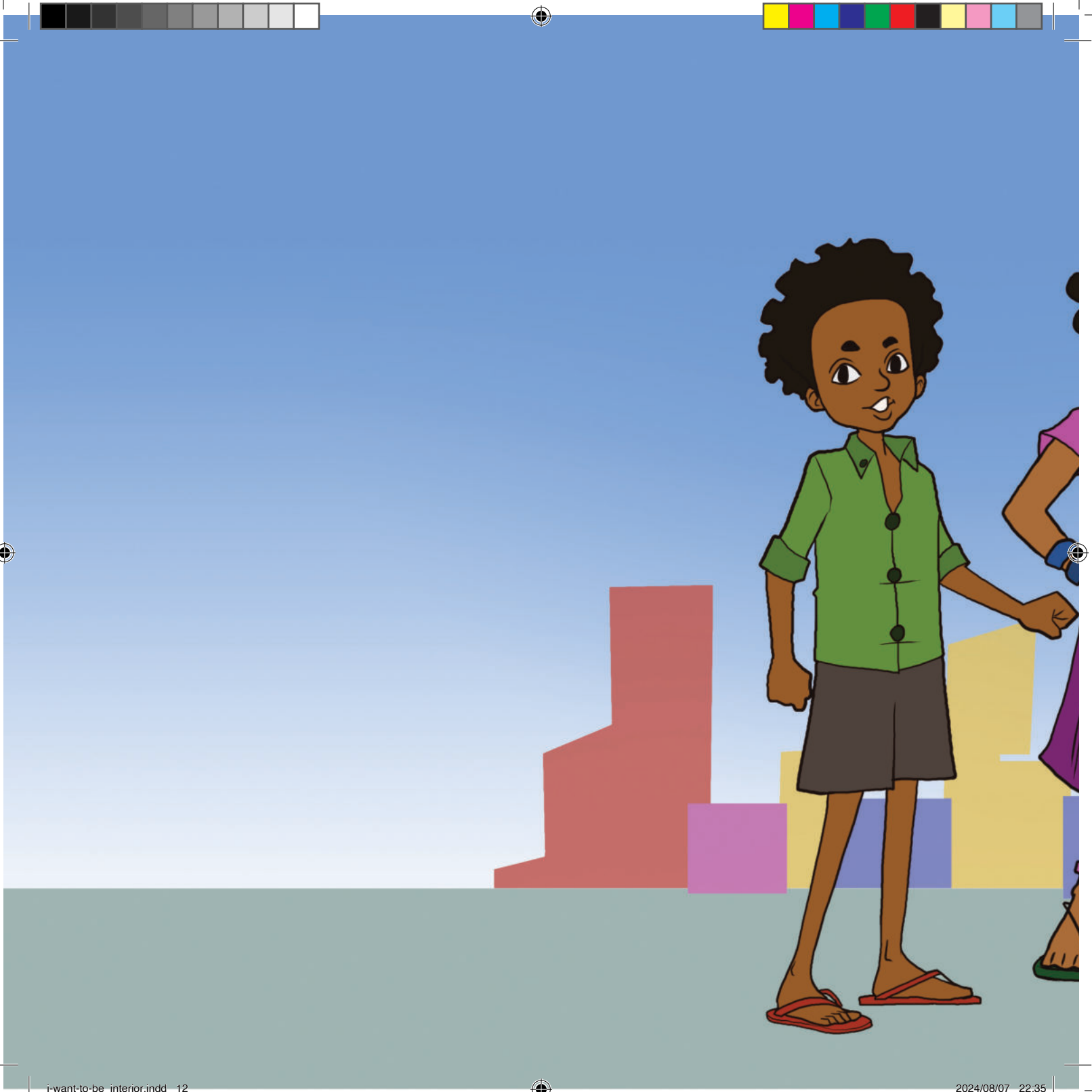




“Tita ge dadab khami ra
ꞑkhomao kai ꞑgao,” tis ge
Elinasa ra mî.











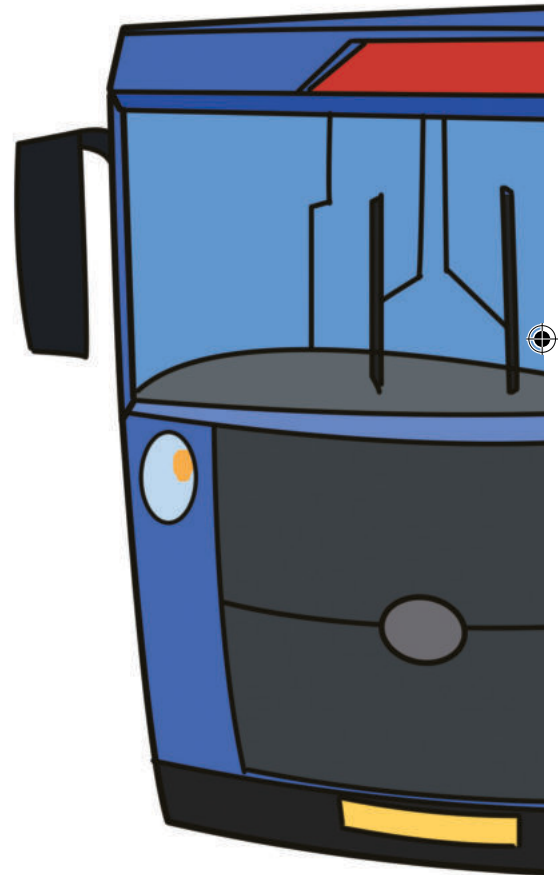
“Tita ge !khān xa !gâibahe,” tis
ge Nalisa ra mî. “Tita ge kai ta
ka o !khāna nî ||amaxū.”

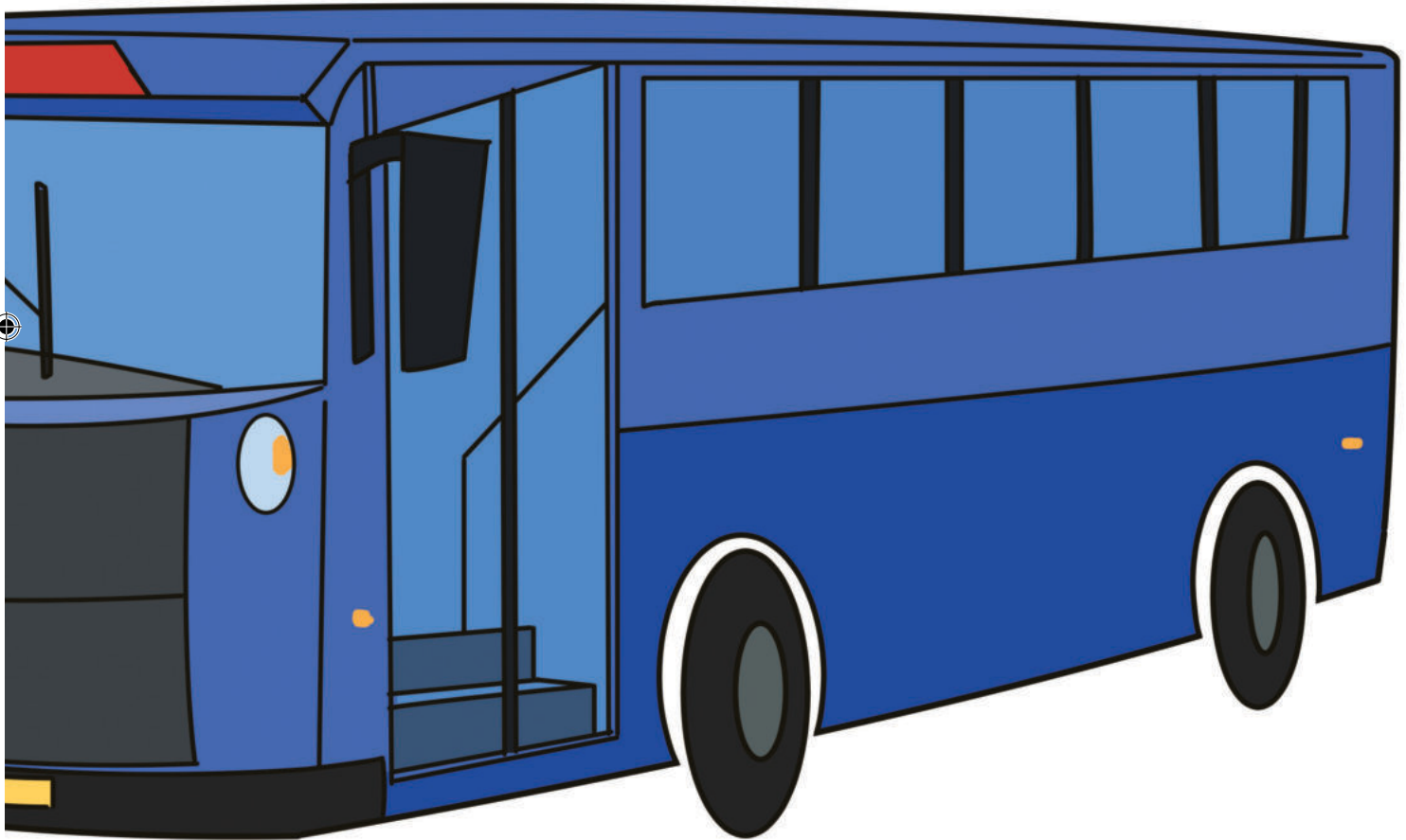






“Tita tsîn ge a bē !nari-ao kai
||khā,” tis ge Elinasa ra mî.







“O, tita ge ais-i xa !gâibahe,”
tis ge Nalisa ra mî. “Mûnanai
re, hoa tsēsas ais-e ra
||amaxū |gausa!”













“Tita ge sâisa ra
||khā||khāsen †gao,”
tis ge Elinasa ra mî.
“Ti aumas khami?”
“Î-Î!”











“Tita ge khomaisa ra
||khā||khāsen †gao,”
tis ge Nalisa ra mî.
Elinas ge †khanisa
ge ū.

“|Khī re, i ta
khomaiba si,”
ti ge mî.





