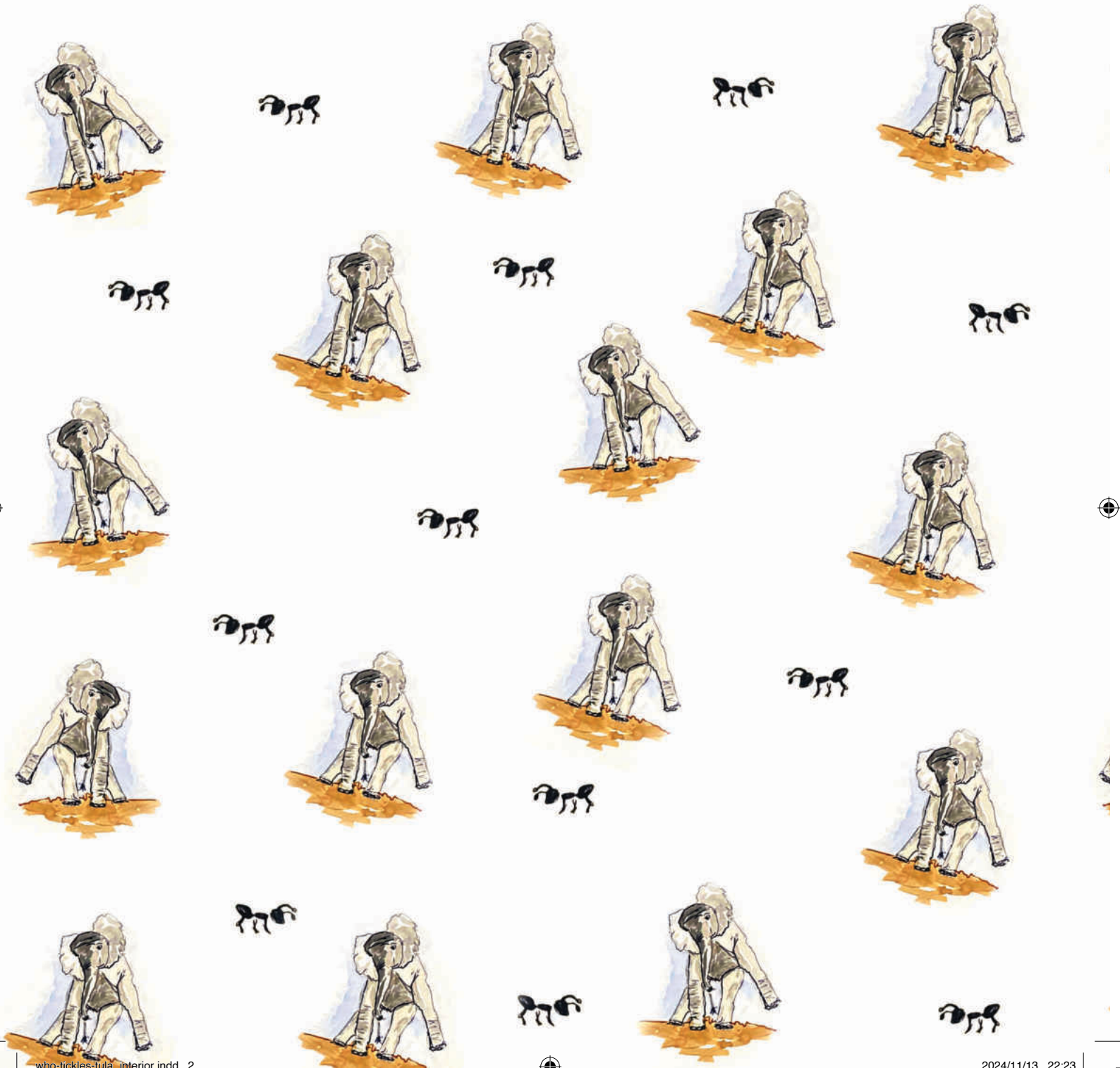


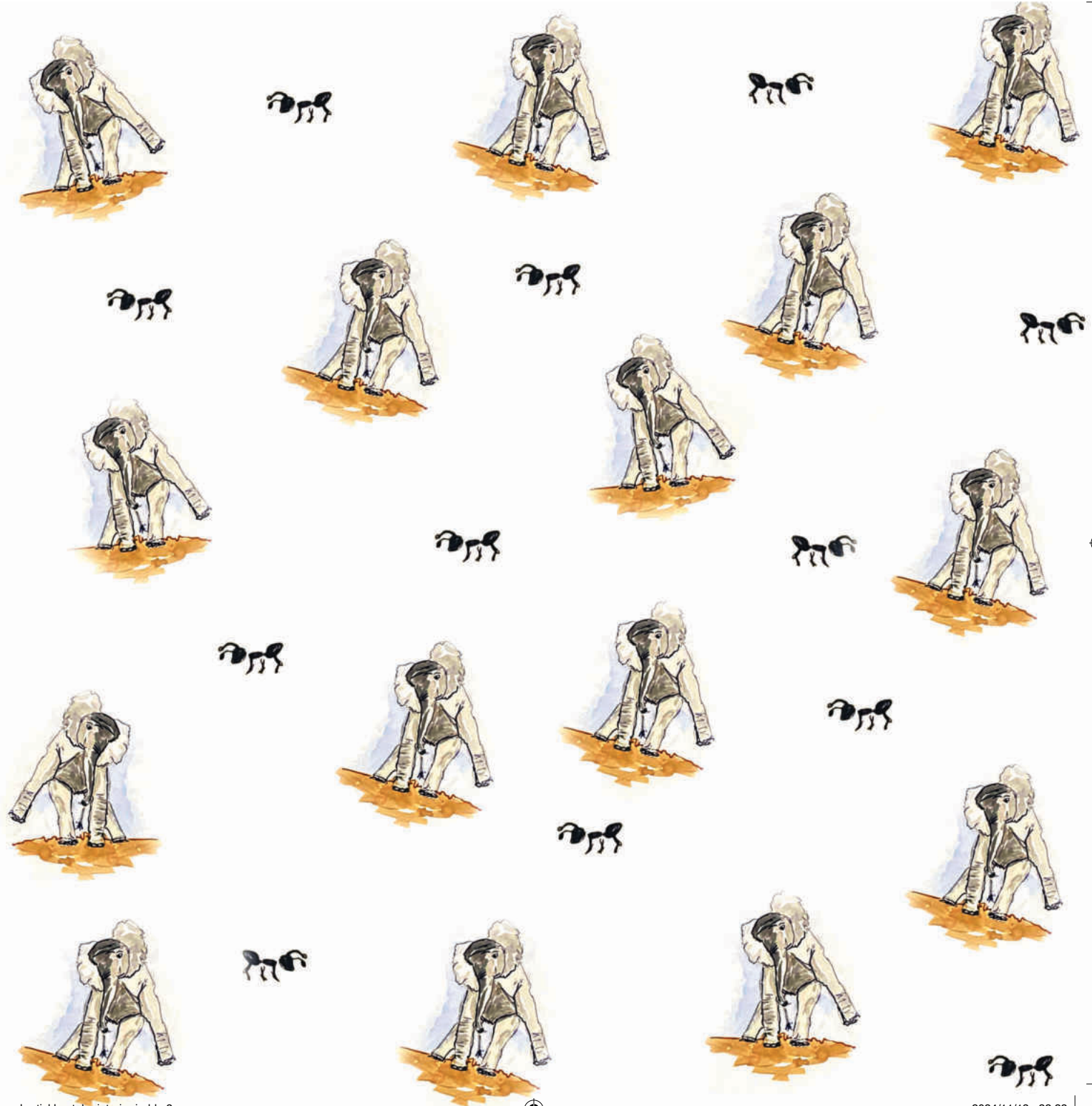


OLYE TA TIKITA TULA?

Embo eli ola









Okanona keshe ngeno oke na okukala ka likola omambo efele eshi ke li pomhindo nhano. Fiyo opo apa, BookSprint oha ongele eenghulungu edi deliyandja doovene, okueta po ounamambo nouhokololo woshiNamibia ovo tava dulu okuudika ko nokuandjanekwa ku keshe umwe. Kouyelele wa wedwa po, tala komalungula oumbo vetu wawa valongekidwa nale, kepandja letu: www.booksprintnamibia.org

Olye ta tikita Tula?

La fanekwa kuLaura-Jo Scriba

La shangwa kuSilke van der Merwe

La tulwa pamufika kuTutaleni Ilonga

La wedelwa kuNasrin Siege

La fatululwa kuIda Maria Auala

La leshululwa ku Annapaila Vakamuena

Omunangeki womapandja kuLisa Borman

BookSprint Namibia pamwe nekwafu laGoethe-Institut Namibia noEmbassy yaGermany moNamibia, Windhoek mo29 Kotoba 2022.

ISBN: 978-99945-909-8-8

This work is licensed under a Creative Commons Attribution 4.0 Licence (<http://creativecommons.org/licenses/by/4.0/>). You are free to share (copy and redistribute the material in any medium or format) and adapt (remix, transform, and build upon the material) this work for any purpose, even commercially. The licensor cannot revoke these freedoms as long as you follow the following license terms:

Attribution: You must give appropriate credit, provide a link to the license, and indicate if changes were made. You may do so in any reasonable manner, but not in any way that suggests the licensor endorses you or your use.

No additional restrictions: You may not apply legal terms or technological measures that legally restrict others from doing anything the license permits.

Notices: You do not have to comply with the license for elements of the material in the public domain or where your use is permitted by an applicable exception or limitation.

No warranties are given. The license may not give you all of the permissions necessary for your intended use. For example, other rights such as publicity, privacy, or moral rights may limit how you use the material.



OLYE TA TIKITA TULA?



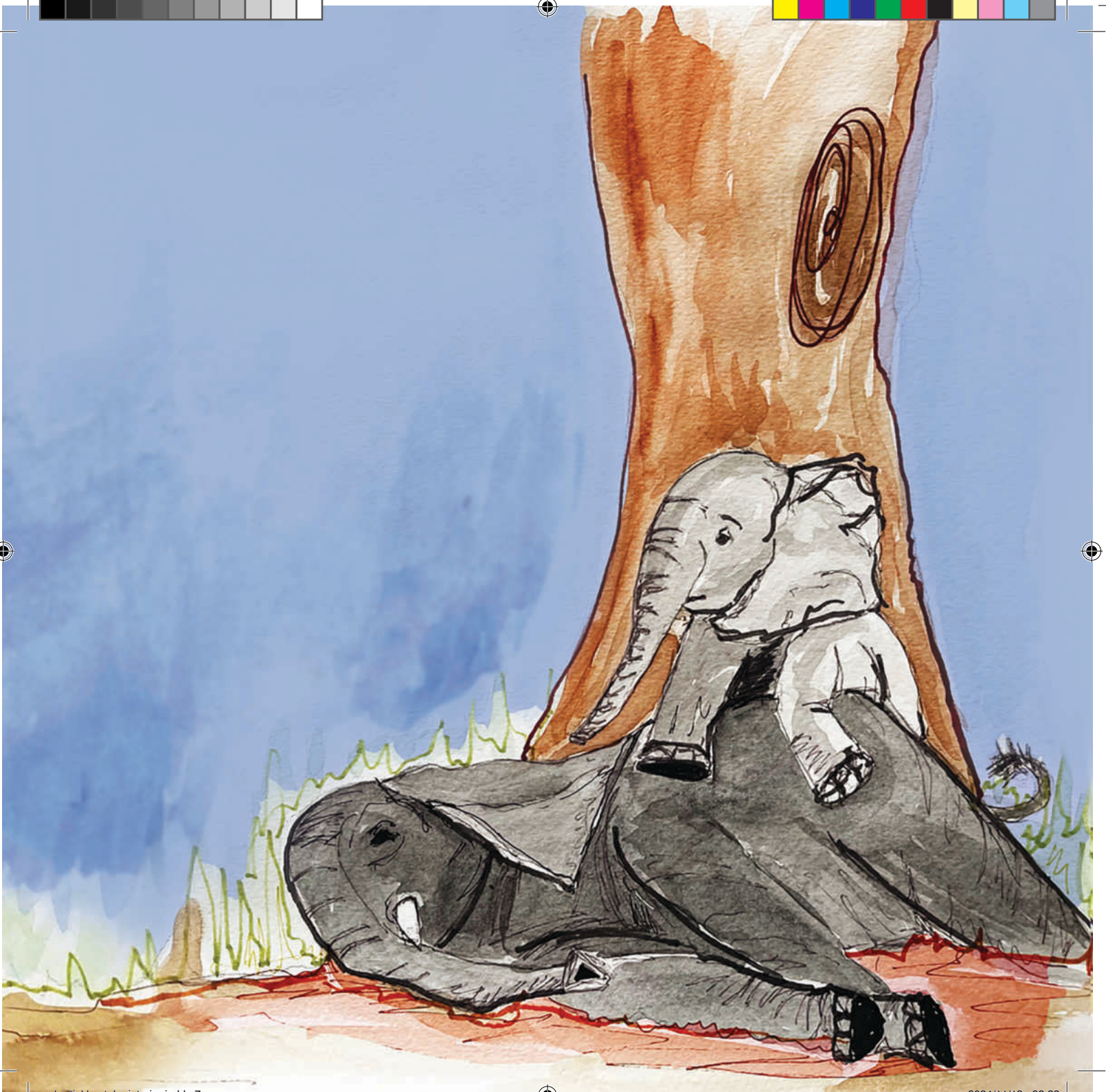
Laura-Jo Scriba | Silke Van Der Merwe | Tataleni Ilonga





**Meme ota kofa po.
Ndele Tula ina loloka nande.**

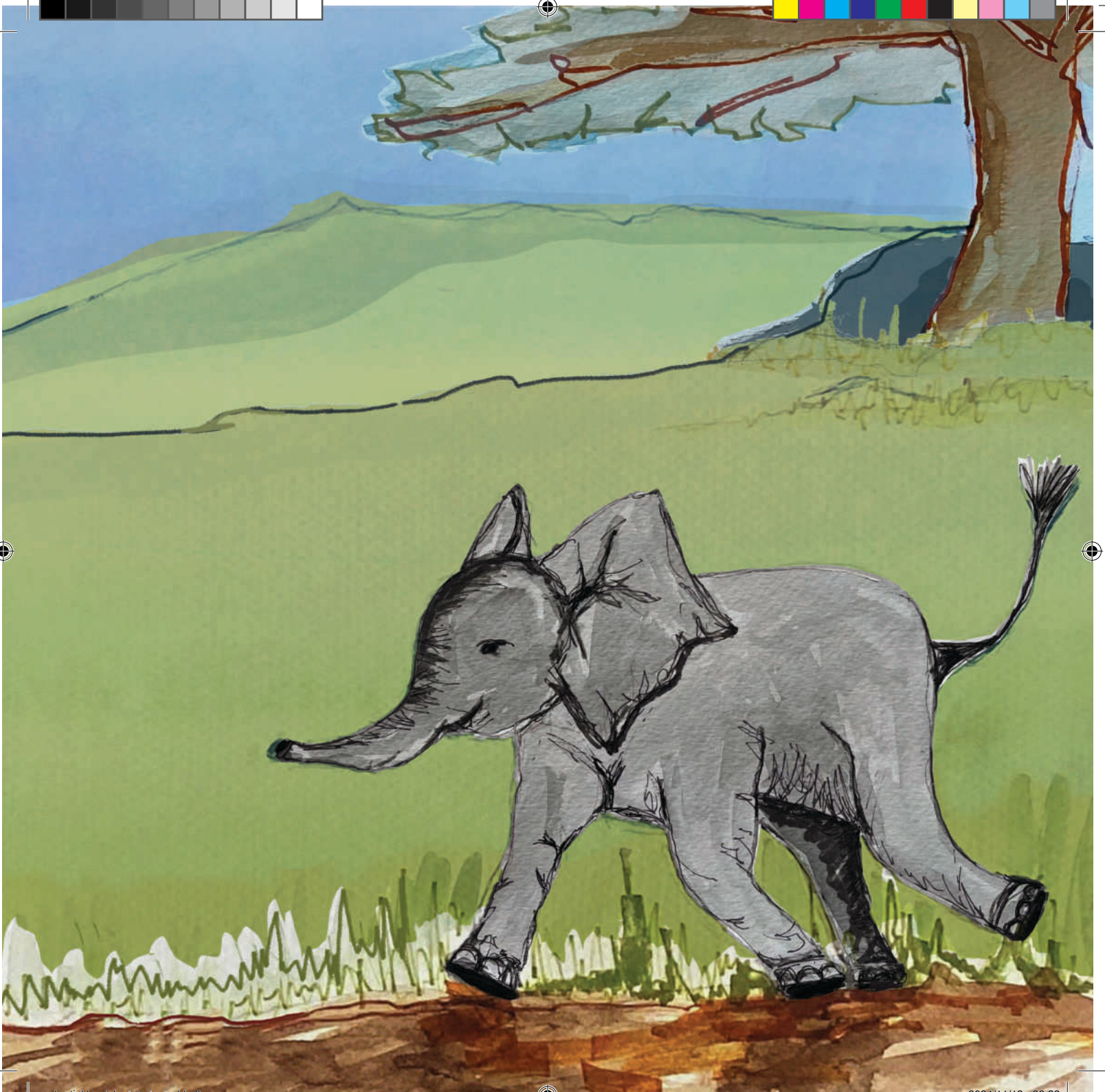






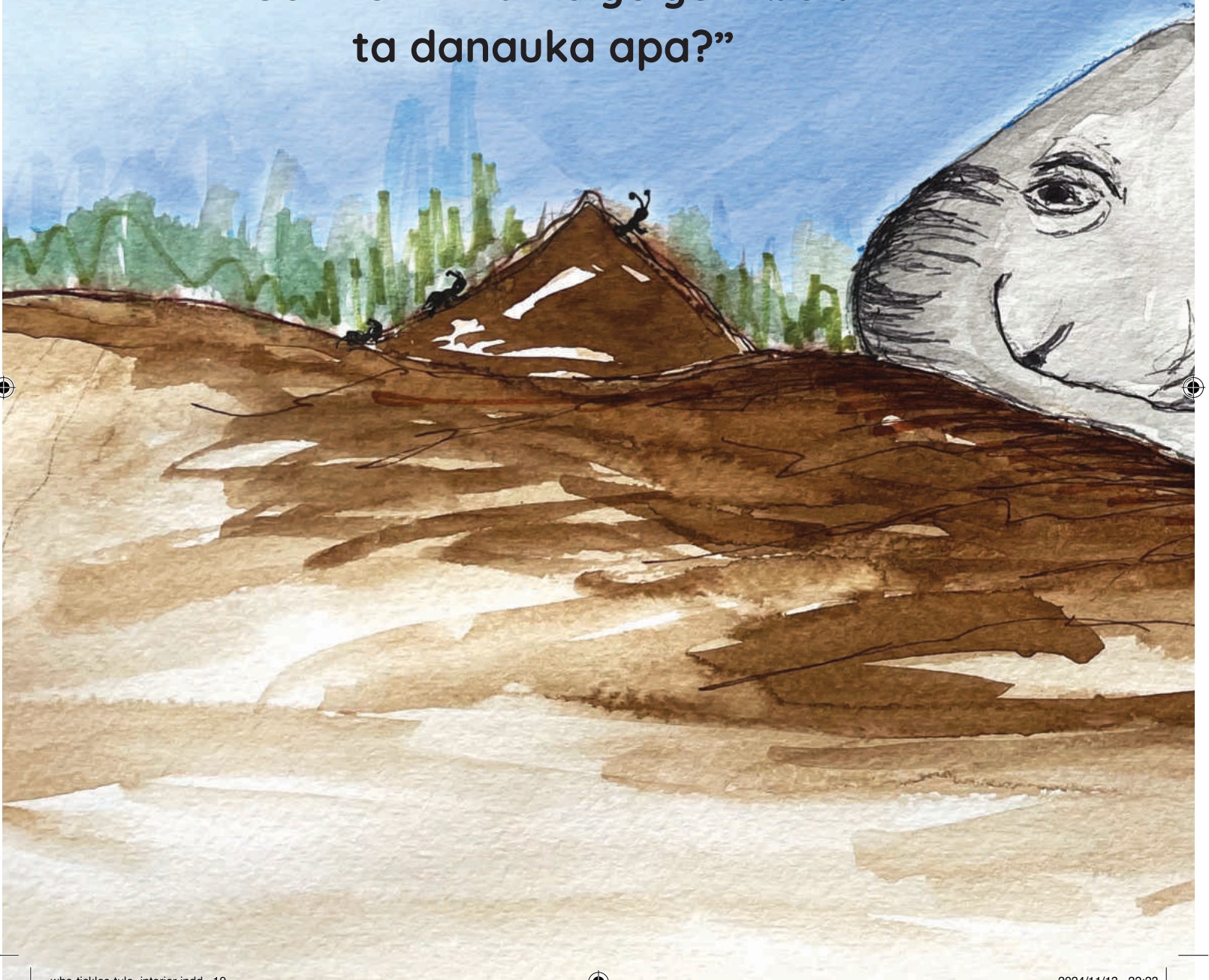
Tula okwa ka endaenda. Okwa
mona oshivanda shedu shishona.







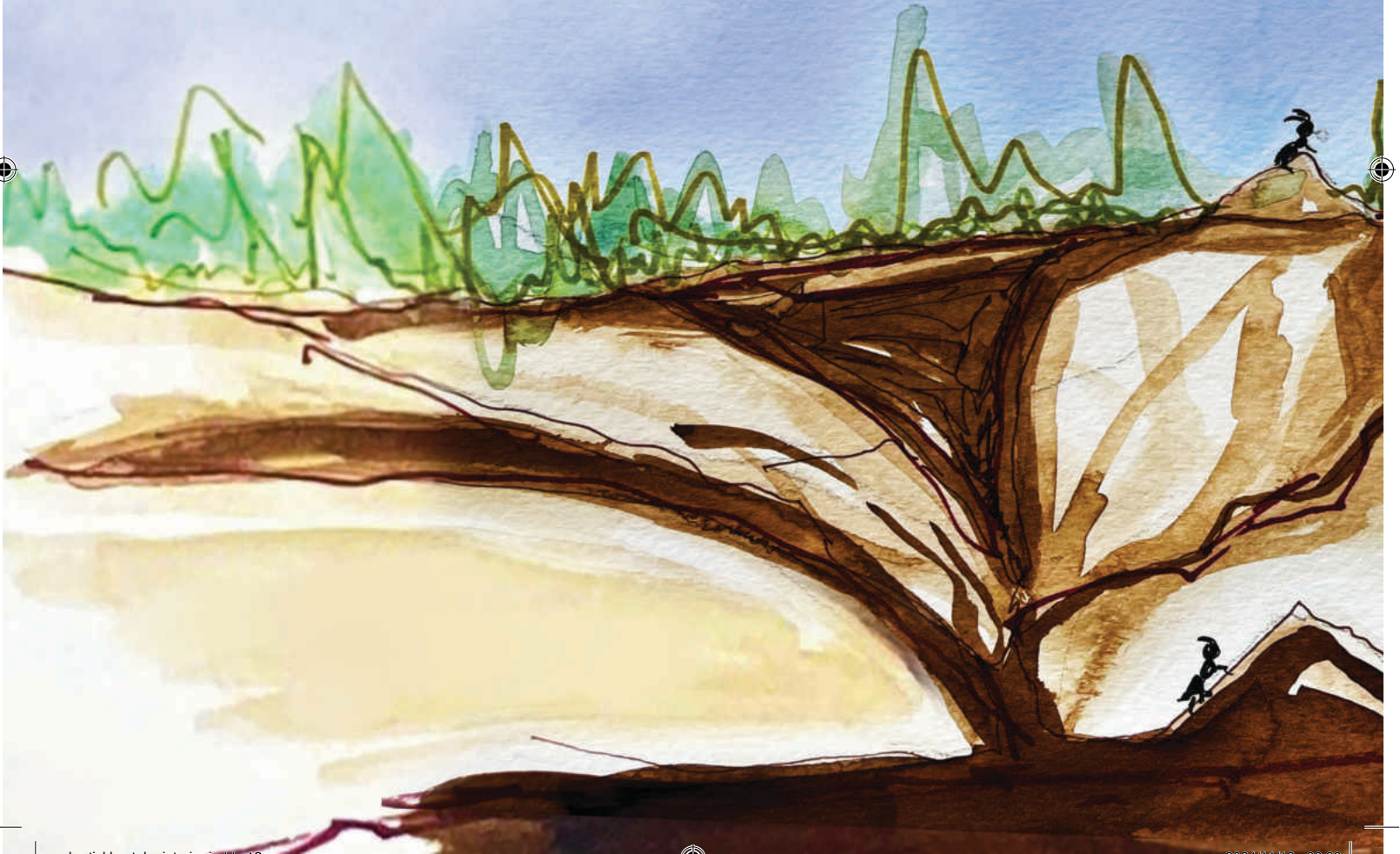
“Oshikumwifa... olyelye mbela
ta danauka apa?”







“Naame yo onda hala okudanauka!”





**“Oove Iye?” Okahedi kanini
taka ende taka kakadala
komunghati waTula.**



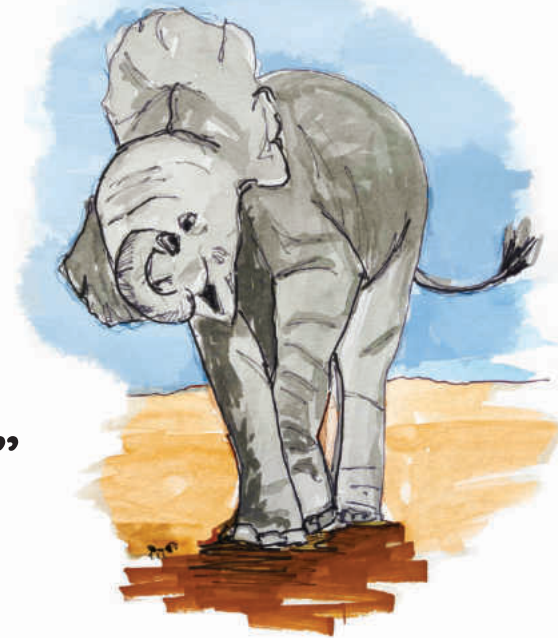


“Oh, otashi tikita nge!”





“Oh, otashi tikita nge!”



“Oh, otashi tikita nge!”

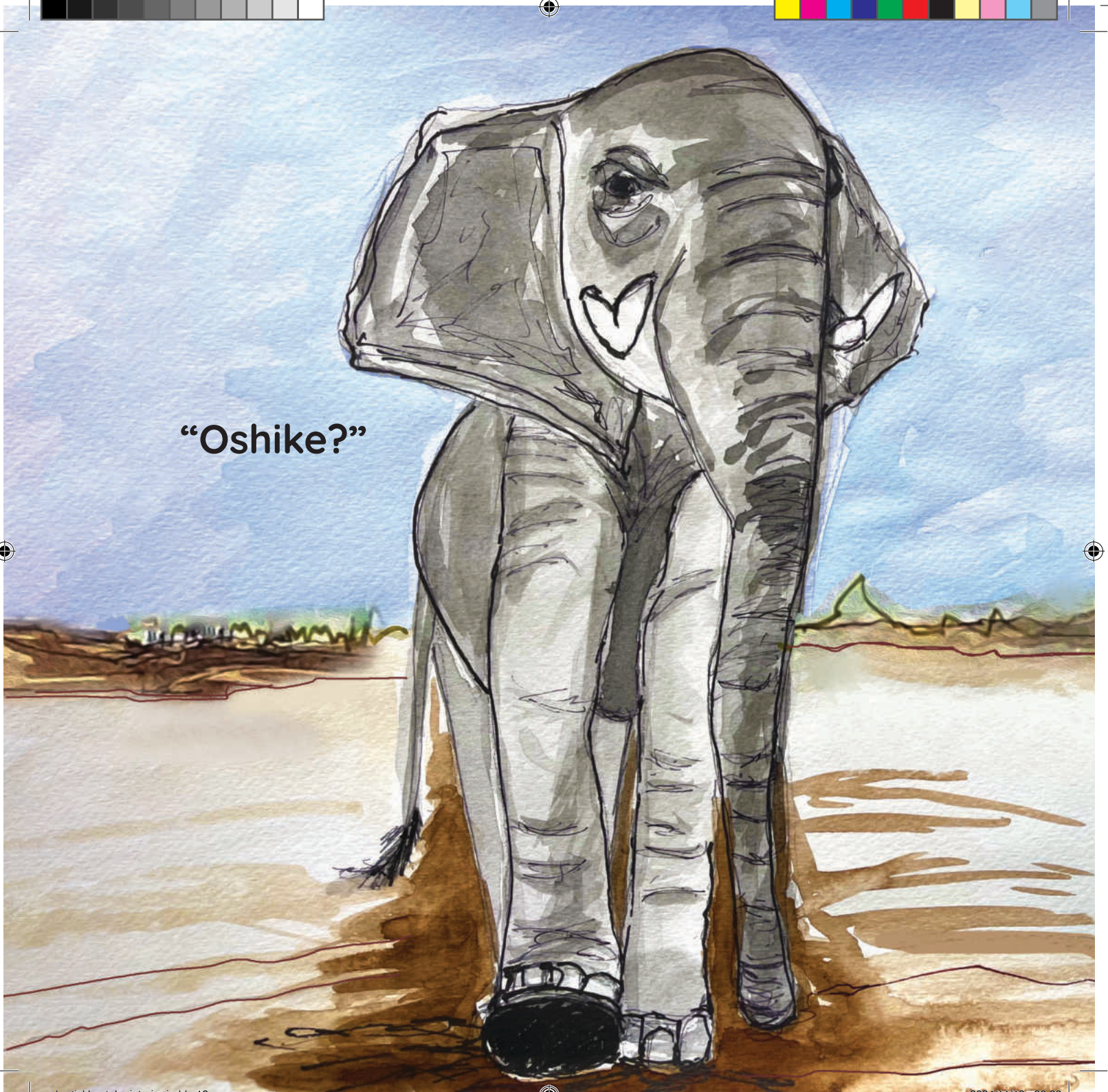




“Atshuuuuuu!”







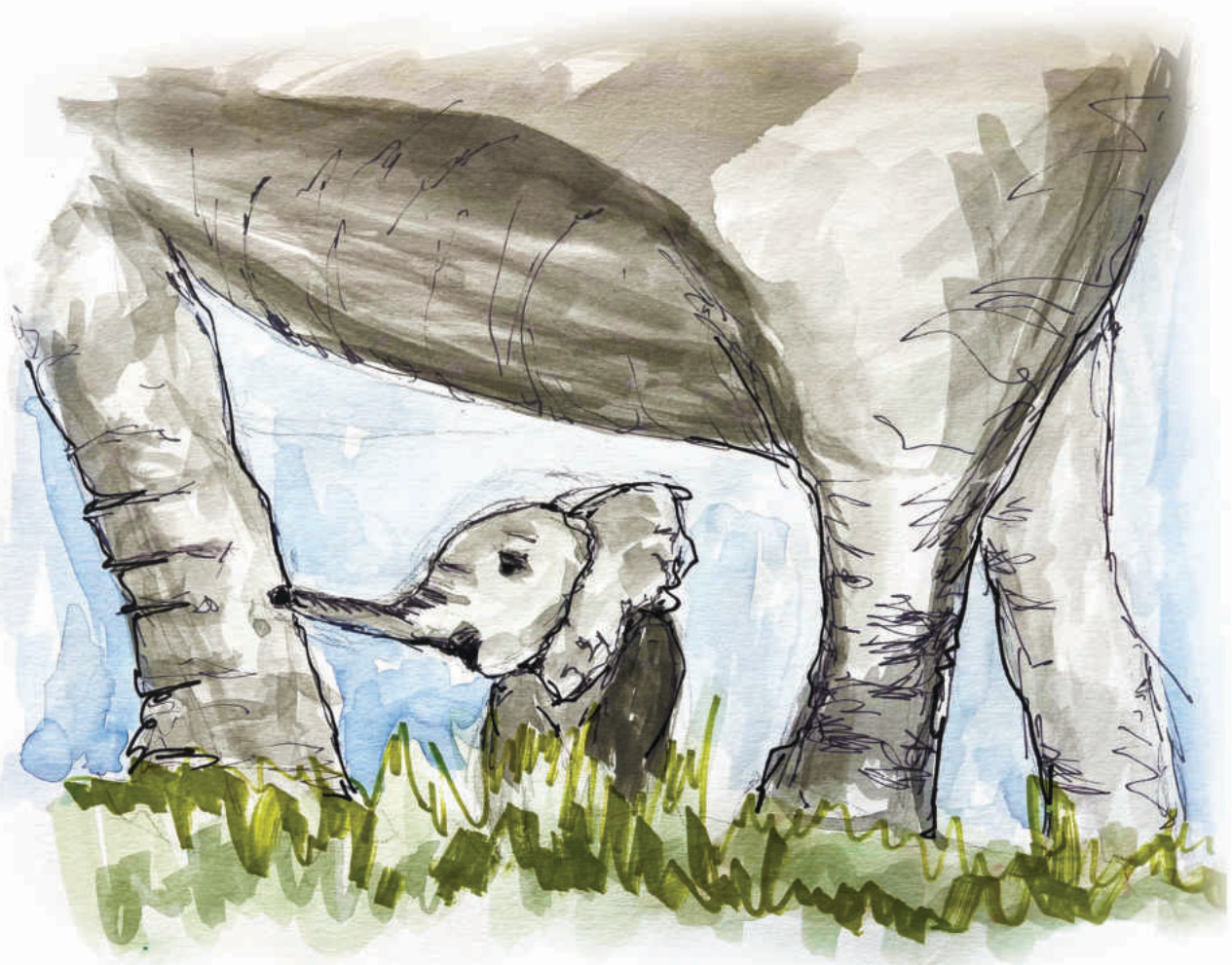
“Oshike?”





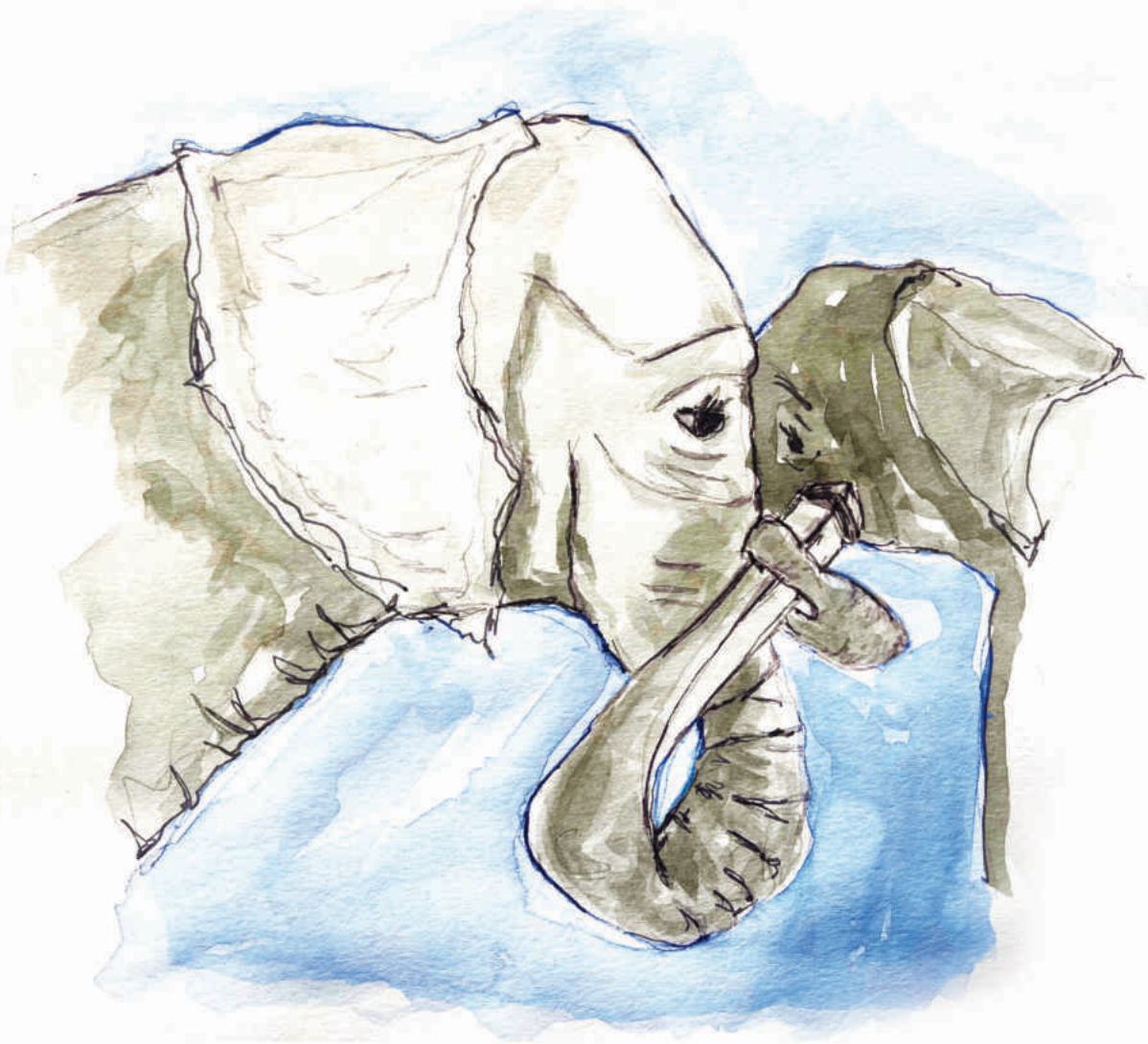
Tula okwa pendula eendjaba.





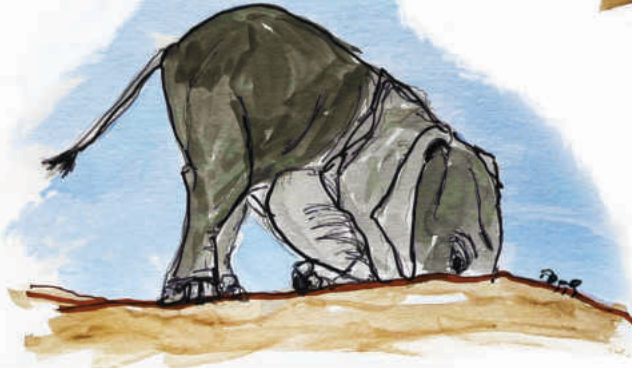


“Onda li ashike handi danauka!”



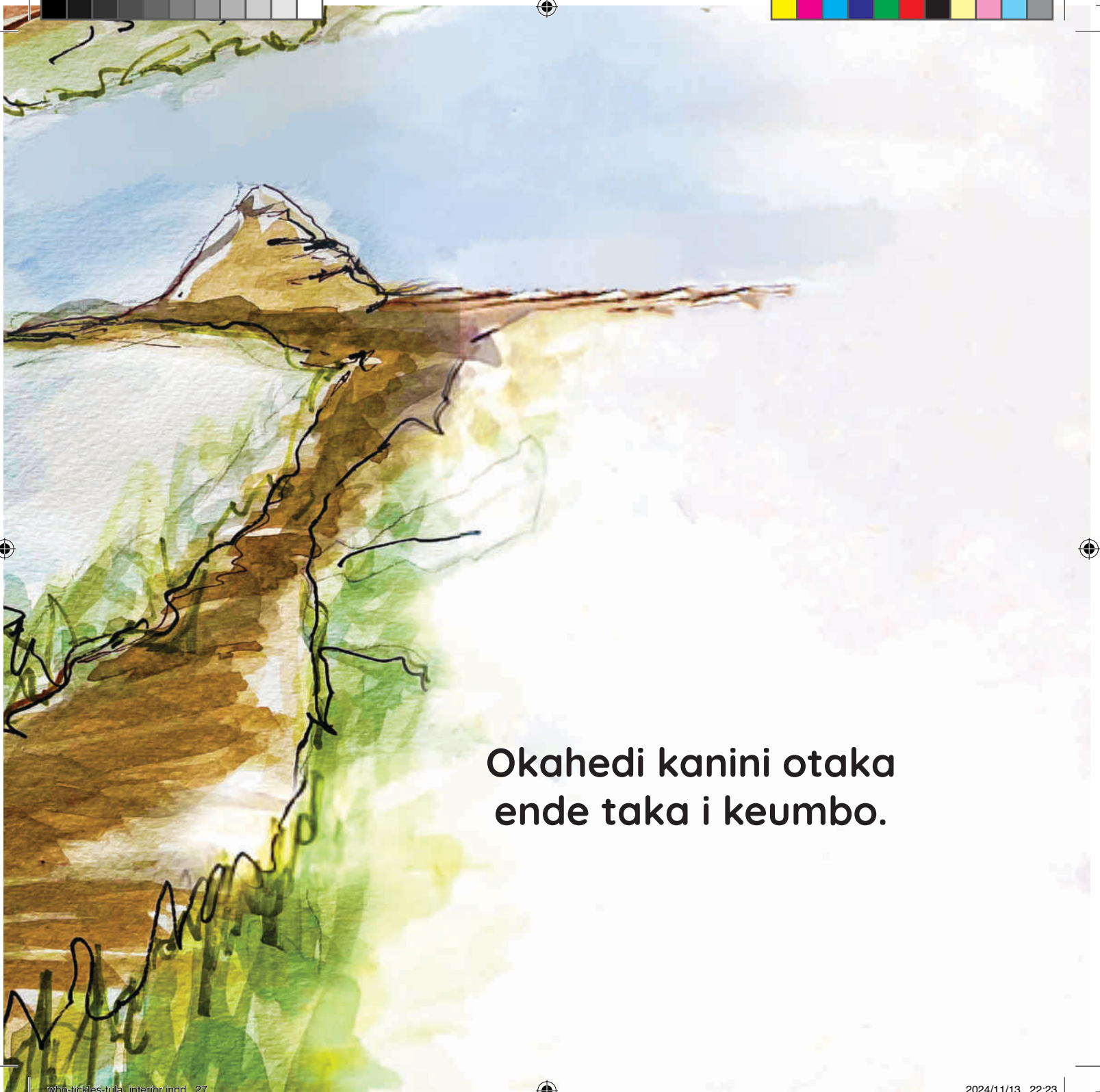


“Ondi shi shii.” Meme ta papatele Tula.



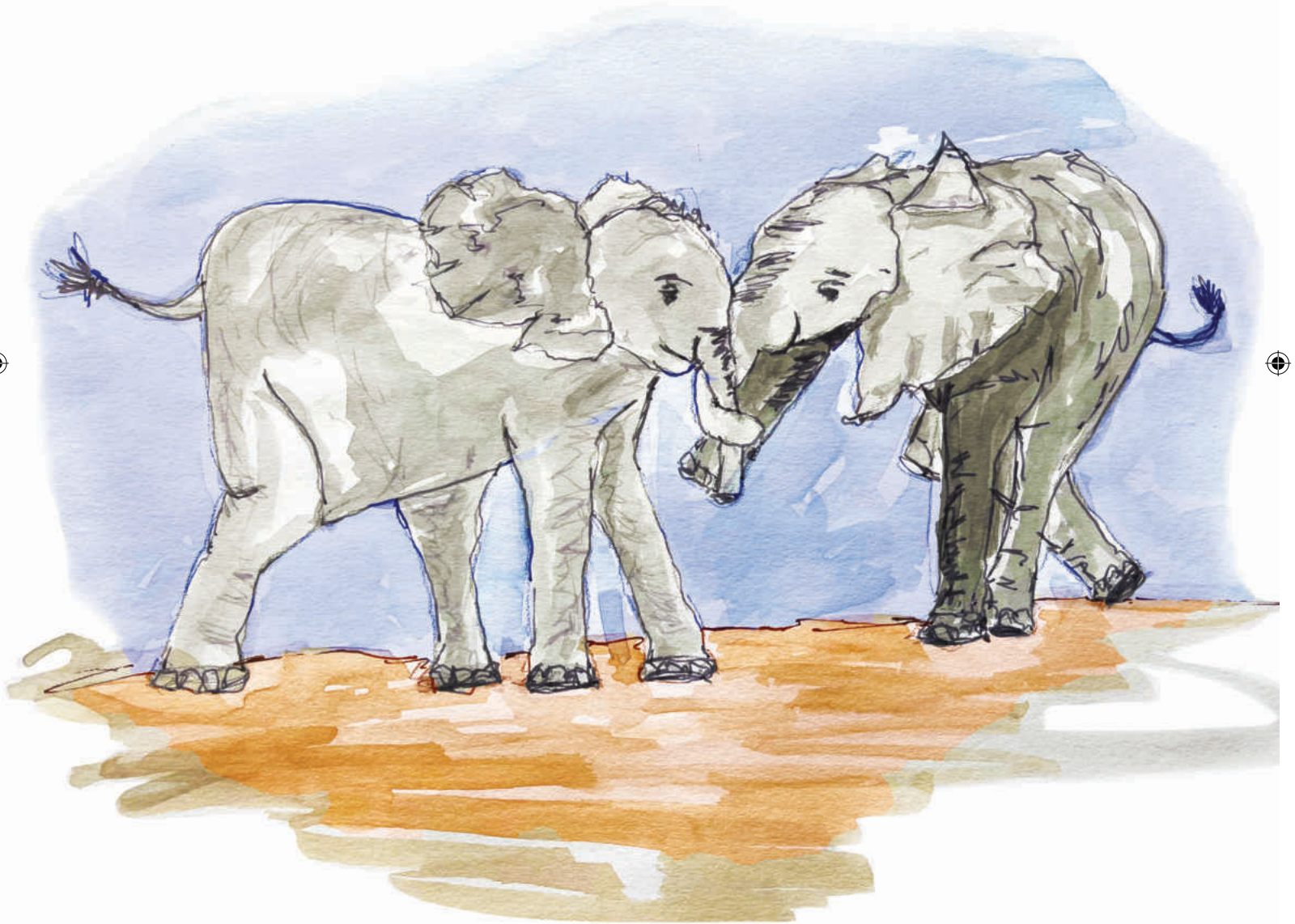






**Okahedi kanini otaka
ende taka i keumbo.**







**“Oshi limbilika!” Tula ta ti, ye ta lotokele
kookaume kaye, te va hokololele
oikumwifa ei a mona ko.**



